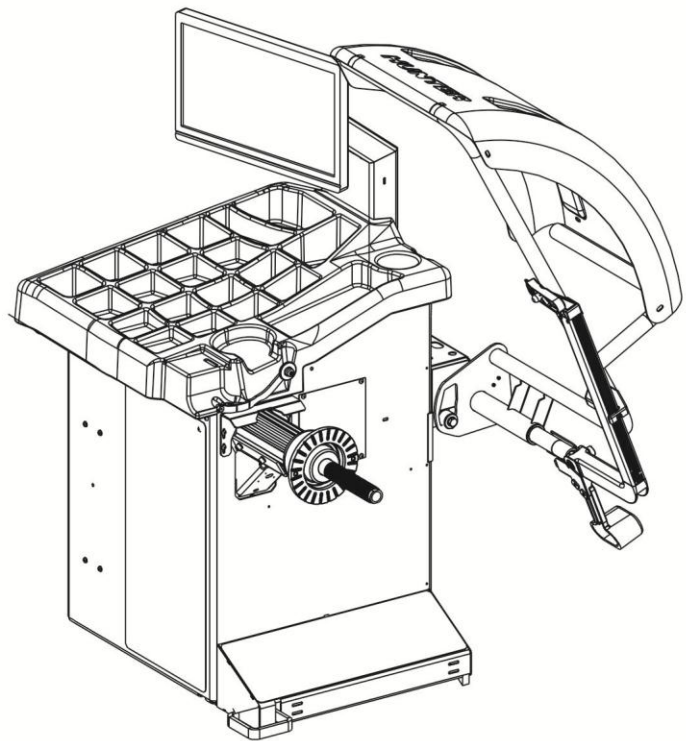
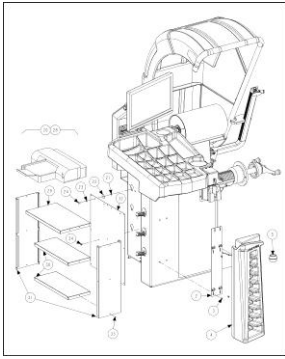


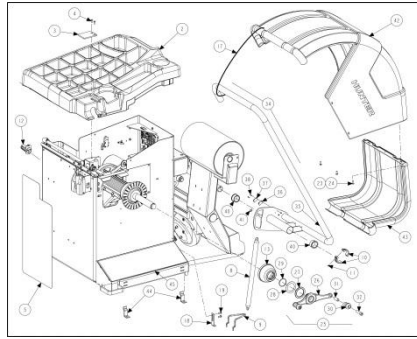
RFT



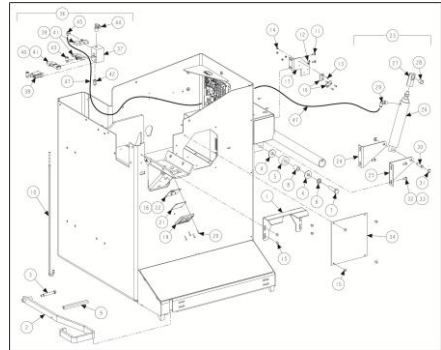
GSP9200 TOUCH



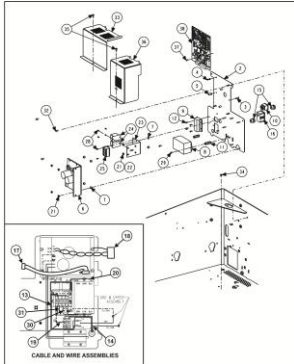
SHEET 3



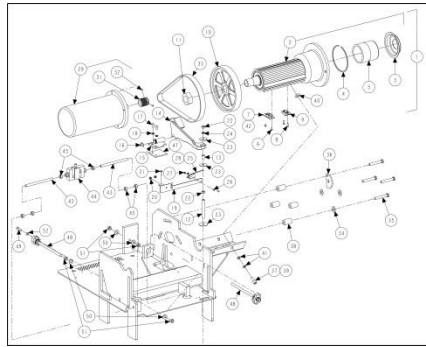
SHEET 4 (RFT)



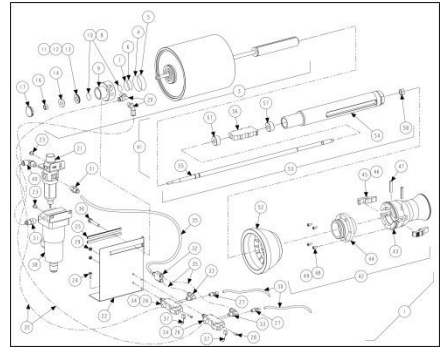
SHEET 6



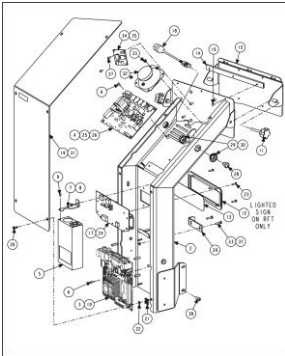
SHEET 7



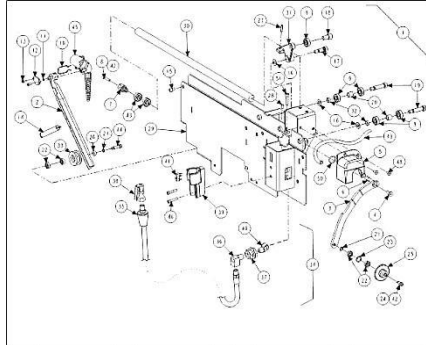
SHEET 8



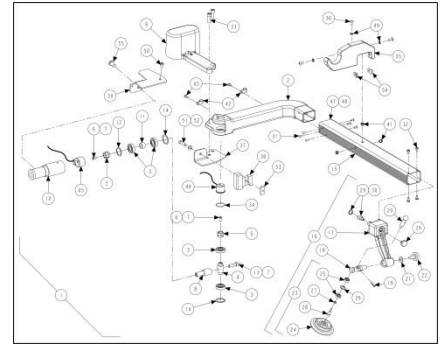
SHEET 9 (RFT)



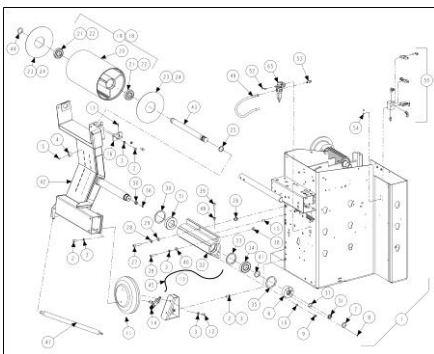
SHEET 11



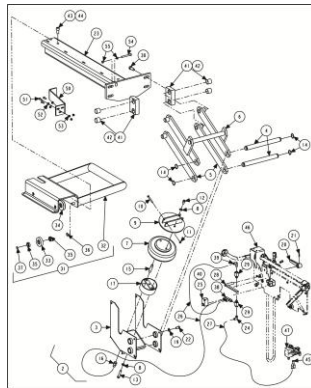
SHEET 12 (RFT)



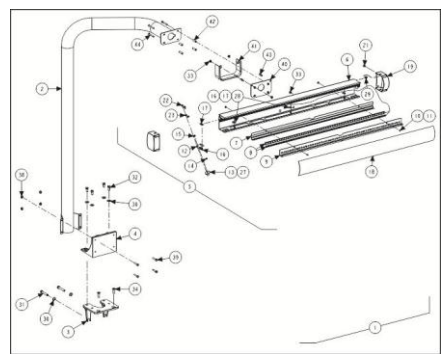
SHEET 14 (RFT)



SHEET 16



SHEET 17



SHEET 18

ROAD FORCE TOUCH (RFT) AND GSP9200 TOUCH - EXPORT

REFER TO NEXT SHEET FOR PARTS DESCRIPTION LISTING

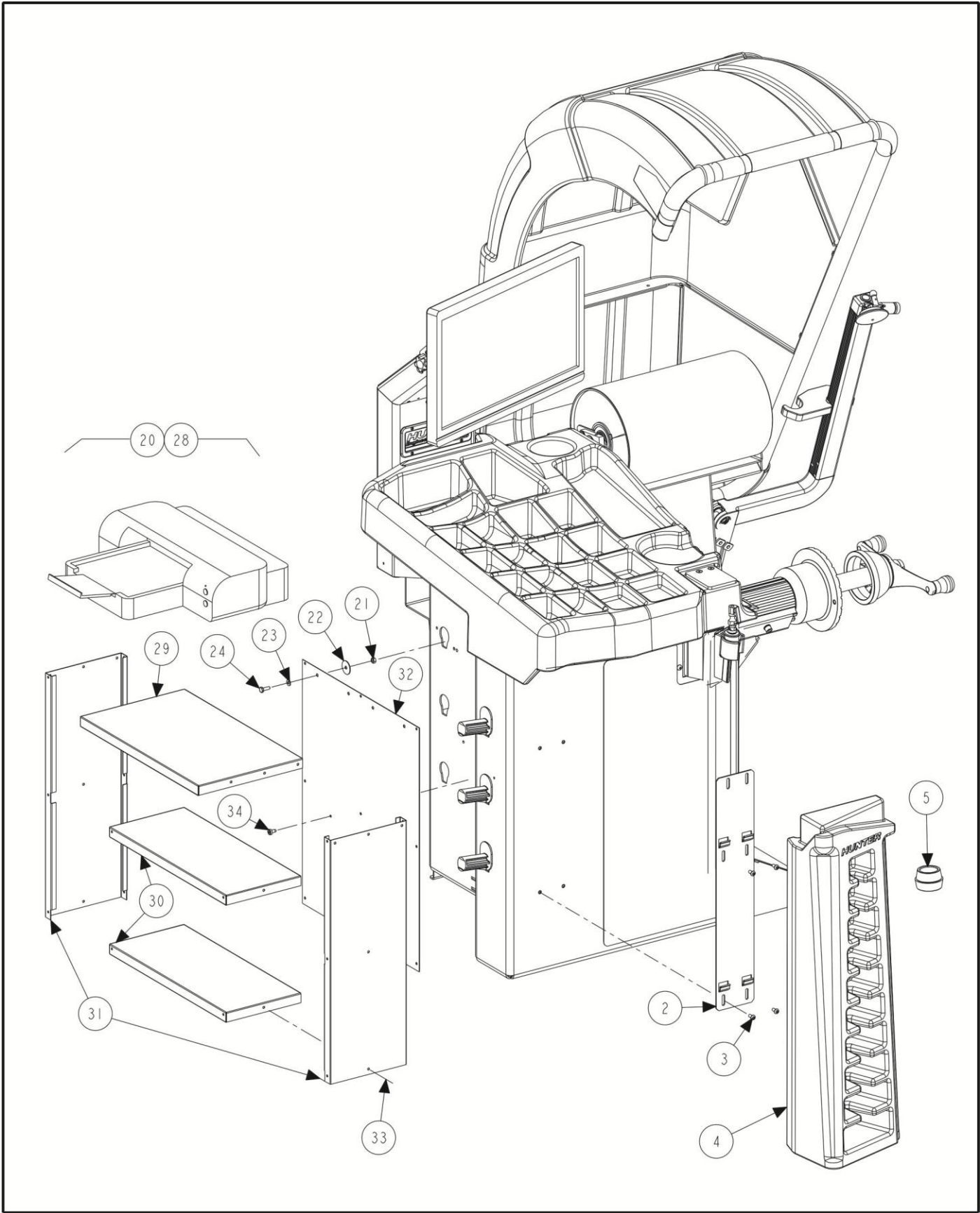
PARTS DESCRIPTION LISTING

Sheet No.	Description (PDF Navigation – Click on thumbnail image or description below to go to sheet)
3	COLLETS AND PRINTER OPTION
4	WEIGHT TRAY, HOOD AND ETC (RFT - MOSTLY FIELD INSTALLED ITEMS)
5	WEIGHT TRAY, HOOD AND ETC (GSP9200 TOUCH)
6	HOOD AND TUB COMPONENTS (FACTORY INSTALLED)
7	ELECTRIC PANEL
8	VIBRATION STRUCTURE
9	RFT AUTOCLAMP FEATURE
10	GSP9200 TOUCH AUTOCLAMP FEATURE (Thumbnail Not Shown)
11	SCREEN SUPPORT
12	RFT INNER DATASET ARM, 103-249-1
13	GSP9200 TOUCH INNER DATASET ARM 103-248-1
14	RFT OUTER DATASET ARM, 103-153-1
15	GSP9200 TOUCH OUTER DATASET ARM 103-180-1
16	RFT LOAD ROLLER
17	WHEEL LIFT
18	TOP DEAD CENTER LASER SYSTEM

BASE ASSEMBLIES (See Sheets 6, 7, 8, 9, 11, 12, 15 and 16)

	Part Number	Description	BALANCERS
1	72-482-1-E	BASE - RFT BALANCER	RFT00E
2	72-501-1-E	BASE-RFT BALANCER WL	RFT10E
3	72-504-1-E	BASE-RFT BALANCER AC	RFT20E
4	72-506-1-E	BASE-RFT BALANCER WL, AC	RFT30E
5	72-530-1-E	BASE-GSP9222 TOUCH BALANCER, EXPORT	GSP9222 TOUCH GSP9224 TOUCH
6	72-533-1-E	BASE-GSP9223 TOUCH BALANCER, EXPORT	GSP9223 TOUCH





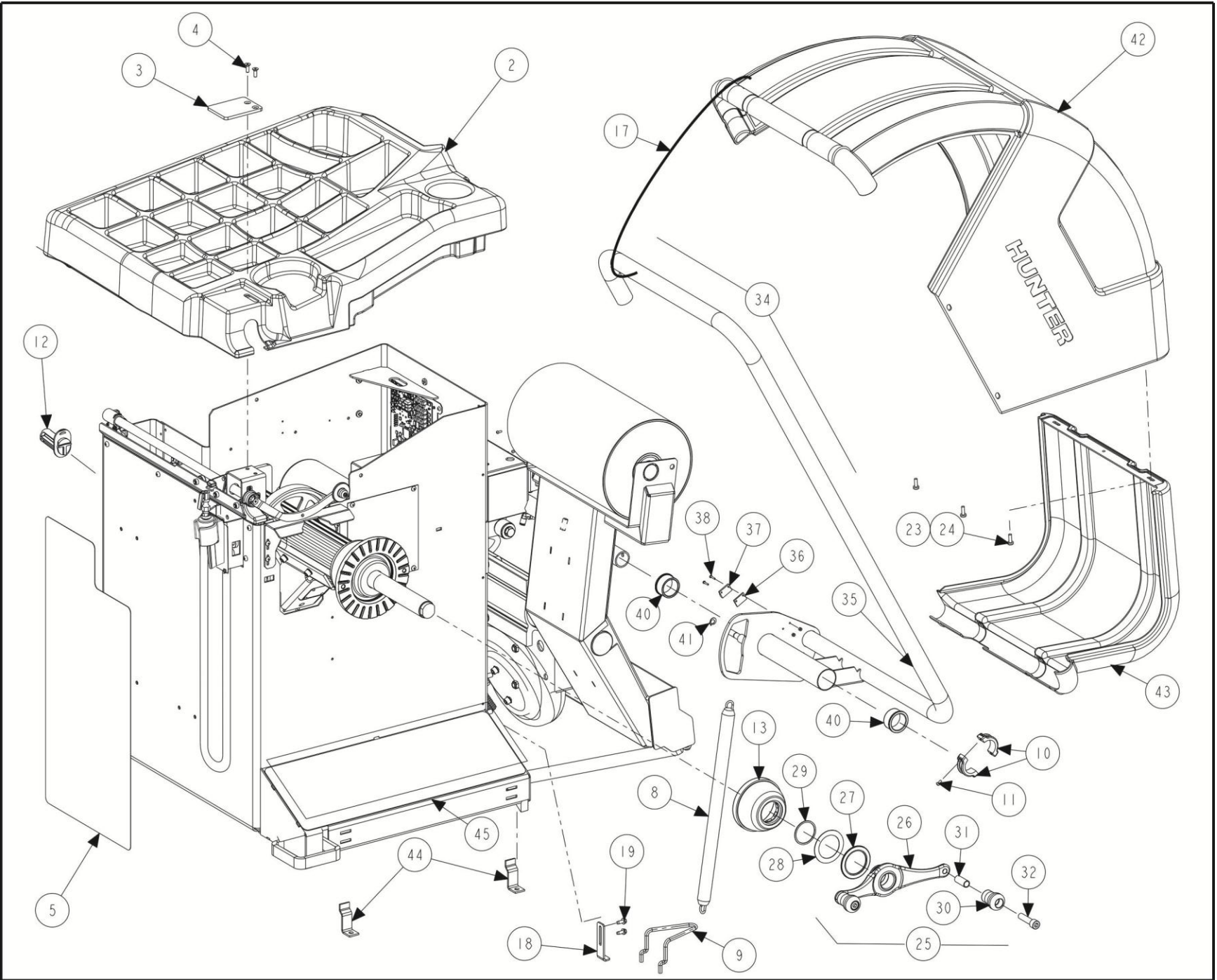
COLLETS AND PRINTER OPTION
REFER TO NEXT SHEET FOR PARTS DESCRIPTION LISTING

PARTS DESCRIPTION LISTING

Form 12-27e, 06-14a

Sheet 3 of 18

Index No.	Part Number	Description	Qty.
1	base	BASE, RFT BALANCER	
2	14-1309-005	BRACKET, CONE SUPPORT	1
3	75-758-2	SOCKET BUTTON HEAD CAP SCREW 1/4-20 X .63 INCH	4
4	56-70-2	CARRIER, CONE, BALANCER FRONT LEFT-HAND	1
5	20-2711-1	KIT, GEN 4 BALANCER CENTERING (Consisting Of:)	1
6	20-2683-1	KIT, P-3/4TON DUAL TAPER COLLET	1
7	192-213-1	CONE, 2.10-2.31, 2.26-2.47 (GREY / BLACK STRIPED)	1
8	192-214-1	CONE, 2.42-2.63, 2.58-2.79 (YELLOW / BLACK STRIPED)	1
9	192-215-1	CONE, 2.74-2.95, 2.89-3.11 (SMALL GREEN / BLACK STRIPED)	1
10	192-216-1	CONE, 3.05-3.27, 3.21-3.42 (SMALL BLUE / BLACK STRIPED)	1
11	192-217-1	CONE, 3.37-3.58, 3.53-3.74 (RED / BLACK STRIPED)	1
12	192-218-1	CONE, 3.69-3.90, 3.85-4.06 (ORANGE / BLACK STRIPED)	1
13	192-219-1	CONE, 4.01-4.22, 4.17-4.38 (LIGHT GREY / BLACK STRIPED)	1
14	192-220-1	CONE, 4.32-4.54, 4.48-4.70 (PURPLE / BLACK STRIPED)	1
15	192-221-1	CONE, 4.64-4.85, 4.80-5.01 (BIG GREEN / BLACK STRIPED)	1
16	192-222-1	CONE, 4.96-5.17, 5.12-5.33 (BIG BLUE / BLACK STRIPED)	1
17a	46-653-2	SPACER, 1.50 INCH WHEEL OFFSET MTG (Not Illustrated)	17a
17b	175-392-1	ADAPTOR, BALANCER CUP WITH RETAINER 6 INCH	17b
17c	106-157-2	SLEEVE, CLAMPING 6 INCH CUP	17c
18	20-2680-1	KIT, BALANCER SOFTWARE (Not Illustrated)	1
19	20-1650-1	KIT, RIM TAGS (Not Illustrated)	1
20	20-2714-1	SHELF PRINTER, GEN 4 BALANCER (Consisting Of:)	1
21	76-368-2	NUT, LOCK 1/4-20 NYLON INSERT	2
22	77-144-2	WASHER, FENDER 1/4 INCH	2
23	77-67-2	WASHER, FLAT 1/4 INCH	2
24	75-29-2	HEX HEAD CAP SCREW 1/4-20X.75 INCH	2
25	38-954-2	CABLE, USB 2.0 A/B 2 METER (Not Illustrated)	1
26	28-90-2	FASTENER, VELCRO 2 INCH HOOK SIDE (Not Illustrated)	1
27	28-89-2	FASTENER, VELCRO 2 INCH LOOP SIDE (Not Illustrated)	1
28	215-166-1	SHELF ASSEMBLY, PRINTER (Consisting Of:)	1
29	215-165-005	SHELF, PRINTER TOP	1
30	215-134-005	SHELF, PRINTER SUPPORT BALANCER	2
31	71-187-005	SIDE, PRINTER SHELF BALANCER	2
32	171-266-005	PANEL, REAR PRINTER SHELF	1
33	48-56-2	RIVET, BLIND 3/16 X 1/4 INCH	23
34	75-458-2	SCREW, SELF-TAPPING 10-16 X 1 INCH	2
35	38-1155-2	CABLE, IEC C13/C14 3 FEET (Not Illustrated)	1
36	38-911-2	CABLE, MONITOR POWER TO PC POWER (Not Illustrated)	1
37	128-1397-3	DECAL, RFT COMPOSITE (Not Illustrated)	1
38	128-603-2	DECAL, AIR PRESSURE LIMITS (Not Illustrated)	1
39	24-164-2	NAMEPLATE GSP9700 PATENT (Not Illustrated)	1



WEIGHT TRAY, HOOD AND ETC (RFT - MOSTLY FIELD INSTALLED ITEMS)

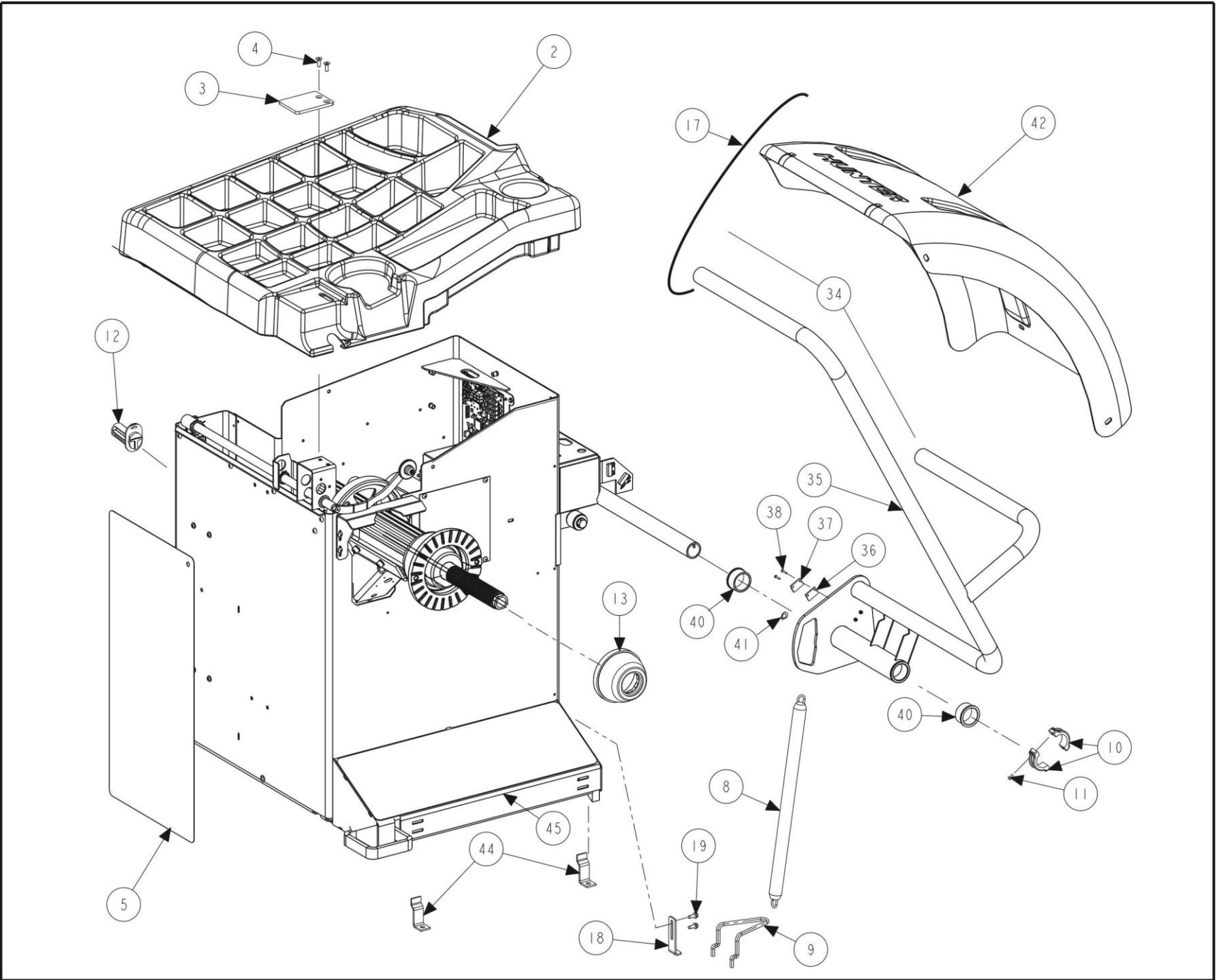
REFER TO NEXT SHEET FOR PARTS DESCRIPTION LISTING

PARTS DESCRIPTION LISTING

Form 12-27e, 06-14a

Sheet 4 of 18

Index No.	Part Number	Description	Qty.
1	BASE	BASE, RFT BALANCER	
2	69-1402-2	COVER, WEIGHT TRAY TRIM, GEN4 SMALL	1
3	51-2168-2	PLATE, WEIGHT ANVIL 9200	1
4	75-68-2	FLAT HEAD SOCKET CAP SCREW 1/4-20 X .75 INCH	2
5	128-1391-2	DECAL, ROAD FORCE TOUCH	1
6	20-2145-1	KIT, GSP BALANCER ACCESSORIES (Consists Of:)	1
7	65-72-2	WEIGHT, CALIBRATION (Not Illustrated)	1
8	98-303-2	SPRING, HOOD	1
9	216-43-2	HOOK, LOWER SPRING MOUNT, GSP BALANCER	1
10	12-157-2	CLAMP HALF, 1.5 INCH SHAFT	2
11	75-35-2	ROUND HEAD MACHINE SCREW 10-32 X .63 INCH	2
12	233-44-2	POST, CONE HOOK PLASTIC	9
13	175-353-1	ADAPTOR, BALANCER CUP WITH RETAINER	1
14	46-320-2	SPACER, SPINDLE SHAFT (Not Illustrated)	1
15	106-82-2	SLEEVE, CLAMPING CUP (Not Illustrated)	1
16	223-68-1	RING, BALANCER PRESSURE WITH RETAINER (Not Illustrated)	1
17	94-35-2	TIE-WIRE, 15 INCH X 1/2 INCH	7
18	14-1346-005	BRACKET, BALANCER LEG LONG	1
19	75-317-2	SCREW, THREAD ROLLING 1/4-20 X 5/8 INCH	2
20	221-589-2	TOOL, WEIGHT HAMMER / PLIERS (Not Illustrated)	1
21	221-658-2	TOOL, NYLON HAMMER HEAD (Not Illustrated)	1
22	221-659-2	TOOL, ADHESIVE WEIGHT REMOVER (Not Illustrated)	1
23	75-128-2	PAN HEAD MACHINE SCREW 1/4-20 X 3/4 INCH	3
24	76-367-2	NUT-FLANGE 1/4-20	3
25	76-433-1	NUT, FORGED WINGNUT WITH HANDLES (Consists Of:)	1
26	76-426-2	NUT, FORGED WINGNUT	1
27	130-145-2	BEARING, NEEDLE THRUST 55 mm INNER DIAMETER	1
28	77-255-2	WASHER, THRUST 55 mm INNER DIAMETER 1 mm THICK	1
29	112-87-2	SNAP RING, SMALLEY WS-200	1
30	142-148-2	HANDLE, WINGNUT	2
31	106-154-2	SLEEVE, WINGNUT HANDLE	2
32	74-206-2	SOCKET HEAD CAP SCREW 1/2-13 X 2 INCH, (FULL-THREAD)	2
33	76-438-2	NUT, STEEL QUICKNUT (Not Illustrated)	1
34	69-1396-1	COVER, GEN4 HOOD ASSEMBLY, RFT (Consisting Of:)	1
35	16-995-1-005	TUBE ASSEMBLY, GEN4 WHEEL COVER, RFT	1
36	46-445	SPACER-MAGNET	1
37	60-24-2	MAGNET-REED SWITCH ACTUATOR	1
38	75-584-2	TRUSS HEAD MACHINE SCREW 4-40X 5/8 INCH STAINLESS STEEL	2
39	76-366-2	NUT, LOCK 4-40 NYLON INSERT	2
40	130-141-2	BEARING, FLANGED 1.5 X 1.0 INCH	2
41	112-15-2	SNAP RING, #5133-50 OR EQUAL	1
42	69-1367-2	COVER, WHEEL, GEN4 BALANCER	1
43	69-1368-2	COVER, RR WHEEL WITH LOAD ROLLER	1
44	216-111-2	HOOK, FLOOR/SHIPPING HOLD DOWN	3
45	64-158-2	PAD, FOOT	1



WEIGHT TRAY, HOOD AND ETC (GSP9200 TOUCH)

REFER TO NEXT SHEET FOR PARTS DESCRIPTION LISTING

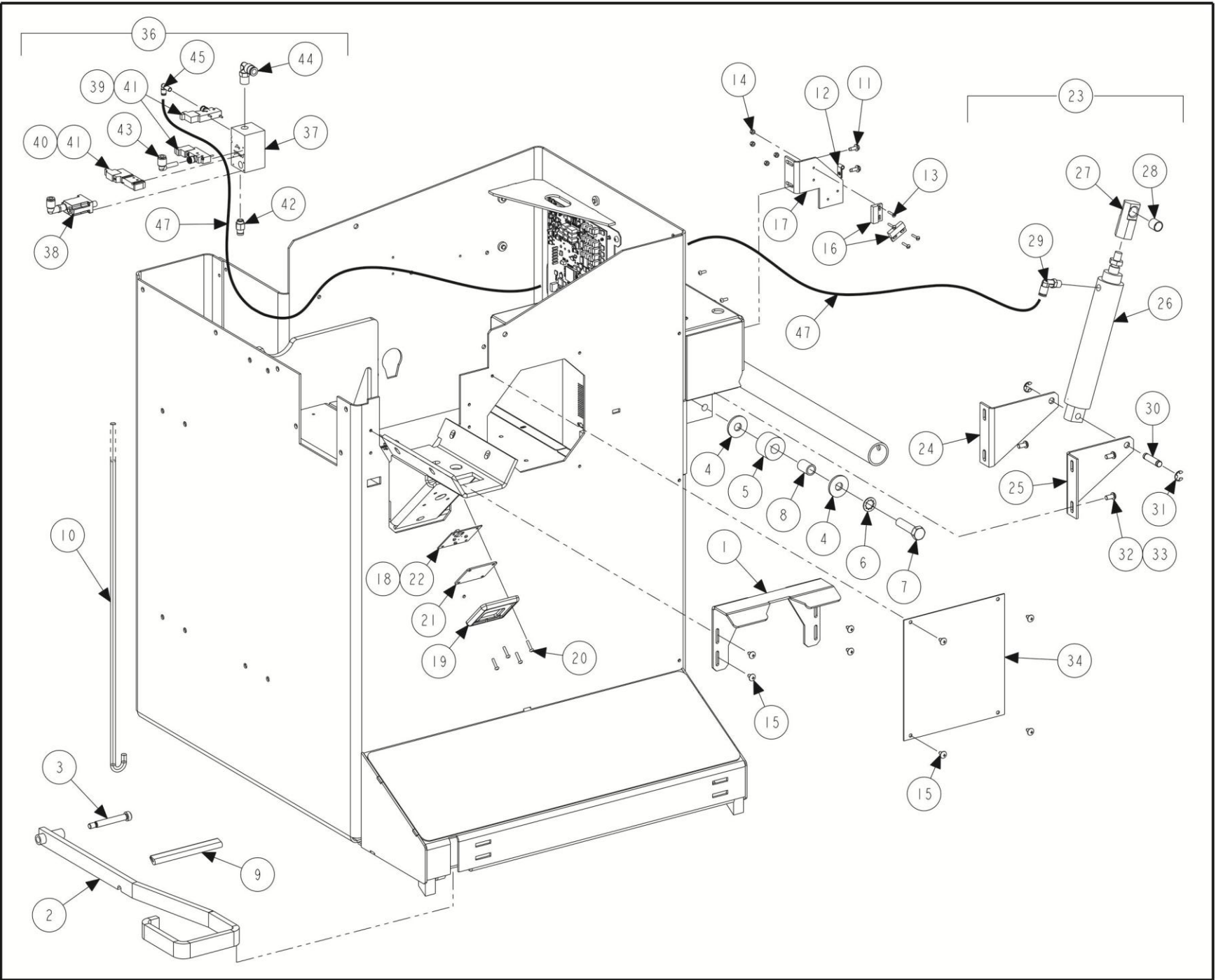
PARTS DESCRIPTION LISTING

Form 12-27e, 06-14a

Sheet 5 of 18

Index No.	Part Number	Description	Qty.
1	BASE	BASE, GSP9223TOUCH BALANCER	
2	69-1402-2	COVER, WEIGHT TRAY TRIM, GEN4 SMALL	1
3	51-2168-2	PLATE, WEIGHT ANVIL 9200	1
4	75-68-2	FLAT HEAD SOCKET CAP SCREW 1/4-20 X .75 INCH	2
5	128-1445-2	DECAL, 9200 TOUCH	1
6	20-2145-1	KIT, GSP BALANCER ACCESSORIES (Consists Of:)	1
7	65-72-2	WEIGHT, CALIBRATION (Not Illustrated)	1
8	98-303-2	SPRING, HOOD	1
9	216-43-2	HOOK, LOWER SPRING MOUNT, GSP BALANCER	1
10	12-157-2	CLAMP HALF, 1.5 INCH SHAFT	2
11	75-35-2	ROUND HEAD MACHINE SCREW 10-32 X .63 INCH	2
12	233-44-2	POST, CONE HOOK PLASTIC	9
13	175-353-1	ADAPTOR, BALANCER CUP WITH RETAINER	1
14	46-320-2	SPACER, SPINDLE SHAFT (Not Illustrated)	1
15	106-82-2	SLEEVE, CLAMPING CUP (Not Illustrated)	1
16	223-68-1	RING, BALANCER PRESSURE WITH RETAINER (Not Illustrated)	1
17	94-35-2	TIE-WIRE, 15 INCH X 1/2 INCH	7
18	14-1346-005	BRACKET, BALANCER LEG LONG	1
19	75-317-2	SCREW, THREAD ROLLING 1/4-20 X 5/8 INCH	2
20	221-589-2	TOOL, WEIGHT HAMMER / PLIERS (Not Illustrated)	1
21	221-658-2	TOOL, NYLON HAMMER HEAD (Not Illustrated)	1
22	221-659-2	TOOL, ADHESIVE WEIGHT REMOVER (Not Illustrated)	1
33	76-438-2	NUT, STEEL QUICKNUT (Not Illustrated)	1
34	69-1432-1	COVER, HOOD ASSEMBLY, 9200T (Consisting Of:)	1
35	16-1028-1-005	TUBE ASSEMBLY, WHEEL COVER, 9200T	1
36	46-445	SPACER-MAGNET	1
37	60-24-2	MAGNET-REED SWITCH ACTUATOR	1
38	75-584-2	TRUSS HEAD MACHINE SCREW 4-40X 5/8 INCH STAINLESS STEEL	2
39	76-366-2	NUT, LOCK 4-40 NYLON INSERT	2
40	130-141-2	BEARING, FLANGED 1.5 X 1.0 INCH	2
42	69-1423-2	COVER, WHEEL, GEN4 EXPORT BALANCER	1
44	216-111-2	HOOK, FLOOR/SHIPPING HOLD DOWN	3
45	64-158-2	PAD, FOOT	1

NOTE: Missing index numbers is intentional.



HOOD AND TUB COMPONENTS (FACTORY INSTALLED)

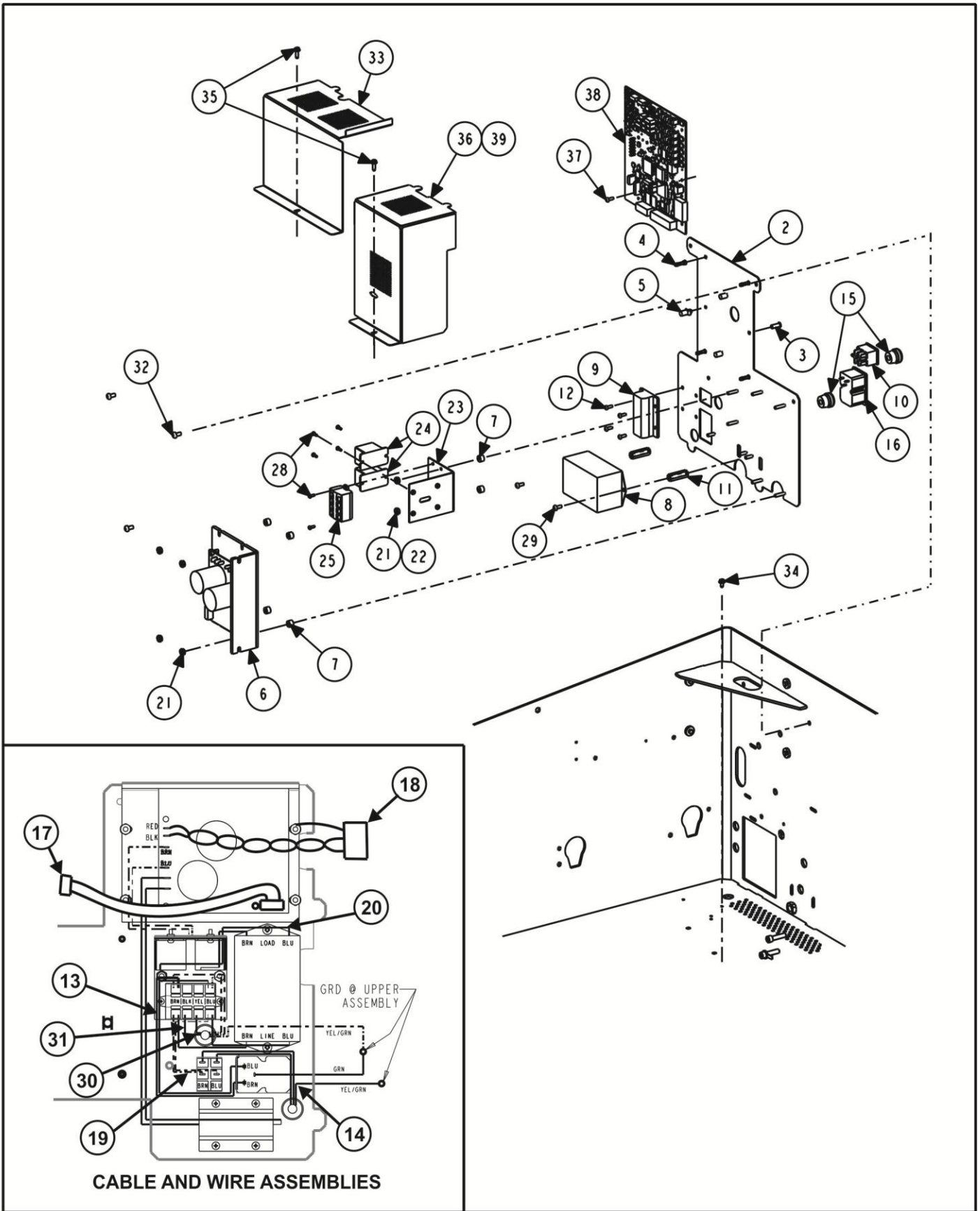
REFER TO NEXT SHEET FOR PARTS DESCRIPTION LISTING

PARTS DESCRIPTION LISTING

Form 12-27e, 06-14a

Sheet 6 of 18

Index No.	Part Number	Description	Qty.
1	14-1231-005	BRACKET, SUPPORT/SHIELD	1
2	164-79-1-005	LEVER ASSEMBLY, BRAKE FOOT PEDAL	1
3	74-351-2	BOLT, SHOULDER 3/8 X 2 1/4 INCH	1
4	77-214-2	WASHER, FLAT 1/2 INCH SPECIAL	2
5	228-25-2	STOP, 1.50 INCH O.D. RUBBER TUBE	1
6	77-22-2	WASHER, LOCK 1/2 INCH INTERNAL TOOTH	1
7	74-345-2	HEX HEAD CAP SCREW 1/2-13 X 2.00 INCH, GRADE 5	1
8	113-174-2	BUSHING, STEEL .69 OD X .522 INCH ID	1
9	64-112-2	PAD, EXTRUDED RUBBER	0.5 IN
10	63-252-2	ROD, BRAKE ACTUATOR	1
11	75-413-2	SCREW, SELF-TAPPING 10-32 X .50 INCH	2
12	12-145-2	CLAMP, CABLE 1/4 INCH DIAMETER	1
13	75-584-2	TRUSS HEAD MACHINE SCREW 4-40 X 5/8 INCH STAINLESS STEEL	4
14	76-366-2	NUT, LOCK 4-40 NYLON INSERT	6
15	75-401-2	TRUSS HEAD SHEET METAL SCREW 10 X 1/2 INCH	8
16	18-497-1	SWITCH, REED SWITCH ASSEMBLY	2
17	14-1116	BRACKET, 9722 HOOD SWITCH	1
18	45-1403-1	PCA, WHEEL LIGHT XPE (RFT Only)	1
19	69-1375-2	COVER, SPINDLE LED (RFT Only)	1
20	75-801-2	SCREW, SELF-TAPPING 6-32 X 3/4 INCH (RFT Only)	4
21	44-38-2	WINDOW, WHEEL ILLUMINATION (RFT Only)	1
22	37-625-1	WIRE ASSEMBLY, SPINDLE LIGHT (RFT Only)	1
23	140-109-1	CYLINDER ASSEMBLY, AUTO HOOD (Consisting Of:) (RFT Only)	1
24	14-1330-005	BRACKET, HOOD CYLINDER, RIGHT-HAND (RFT Only)	1
25	14-1331-005	BRACKET, HOOD CYLINDER, LEFT-HAND (RFT Only)	1
26	140-110-2	CYLINDER, AUTO HOOD (RFT Only)	1
27	121-306-2	BLOCK, CYLINDER ROD END (RFT Only)	1
28	113-315-2	BUSHING, ROD END (RFT Only)	1
29	145-409-2	FITTING, 1/4 TUBE 1/8 INCH NPT METAL ELBOW (RFT Only)	1
30	135-511-2	PIN, CLEVIS, 3/8 DIAMETER, 1-1/4 INCH LONG (RFT Only)	1
31	112-14-2	SNAP RING, #5133-37 OR EQUAL (RFT Only)	2
32	77-71-2	WASHER, LOCK 1/4 INCH HELICAL SPRING	4
33	75-758-2	SOCKET BUTTON HEAD CAP SCREW 1/4-20 X .63 INCH	4
34	69-1028-PPP	COVER, SPINDLE DRIVE MOTOR	1
35	111-140-1	LOAD ROLLER ASSEMBLY, GEN4 RTF (Includes:)	REF
36	108-236-1	PNEUMATIC ASSEMBLY, RFT BALANCER (Consisting Of:)	1
37	185-35-2	MANIFOLD, PNEUMATIC, RFT	1
38	136-79-2	REGULATOR MANFOLD MOUNT & FITTING	1
39	108-195-2	VALVE, 3-PORT MANIFOLD MOUNT	2
40	108-196-2	VALVE, 5 PORT MANIFOLD MOUNT	1
41	38-1094-1	CABLE, MANIFOLD ASSEMBLY	3
42	145-216-2	FITTING, 5/16 INCH TUBE X 1/8 INCH NPT ADAPTOR	1
43	145-357-2	FITTING, 1/4 INCH NPT PLUG IN ELBOW	1
44	145-183-2	FITTING, 1/4 INCH NPT ELBOW SWIVEL	1
45	145-467-2	FITTING, 1/4 TO 5/32 INCH PLUG-IN ELBOW	1
46	FIELD OBTAIN	LOCTITE #545 THREAD SEALANT (Not Illustrated)	A/R
47	16-450-2	TUBE, AIR 5/32 INCH OUTER DIAMETER	40 in.



ELECTRIC PANEL

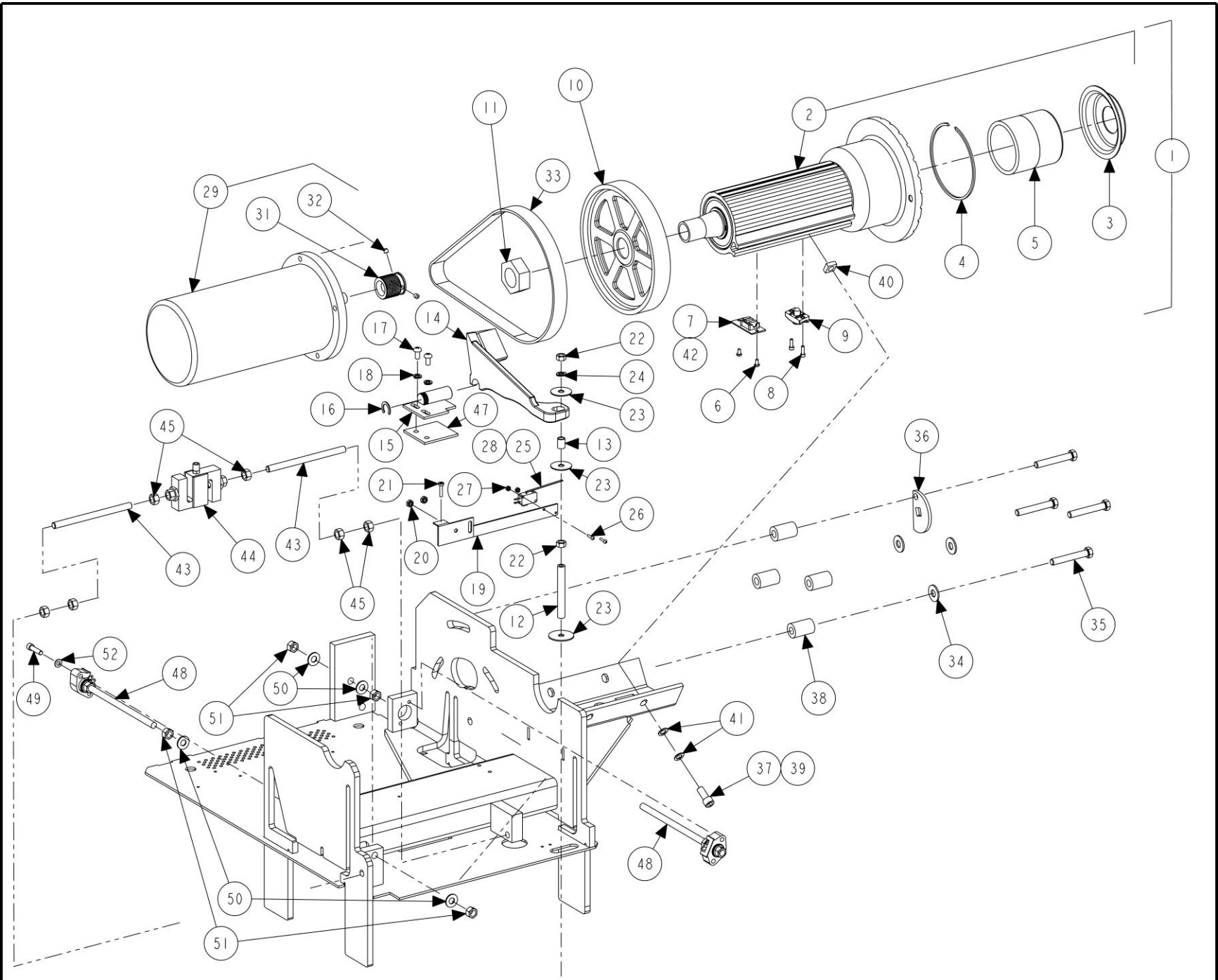
REFER TO NEXT SHEET FOR PARTS DESCRIPTION LISTING

PARTS DESCRIPTION LISTING

Form 12-27e, 06-14a

Sheet 7 of 18

Index No.	Part Number	Description	Qty.
1	232-269-1	ELECTRIC PANEL, GEN4 BALANCER (Consisting Of:)	1
2	51-2748-1	PLATE ASSEMBLY, ELECTRONICS, GEN4 (Includes:)	1
3	46-581-2	SPACER, PRESS IN 632 X .562 INCH LONG	1
4	46-580-2	SPACER, SNAP TOP STANDOFF	4
5	46-579-2	SPACER, NYLON PUSH IN .437 INCH HIGH	3
6	232-232-2	DC MOTOR DRIVE, 230V/8A	1
7	46-704-2	SPACER #8 X .25 INCH LONG	4
8	136-108-2	FILTER, POWER LINE RFI	1
9	81-82-1	RESISTOR ASSEMBLY, 75 OHM WITH LEADS	1
10	18-270-2	SWITCH, DOUBLE PULL SINGLE THROW ROCKER	1
11	46-705-2	STANDOFF, 3/8 HEX, 8-32 X 1-1/4 INCH	2
12	75-24-2	ROUND HEAD MACHINE SCREW 6-32 X .38 INCH	4
13	38-1215-2	POWER CORD, SPLIT IEC	1
14	38-1149-1	CABLE ASSEMBLY, POWER GEN IV BAL	1
15	59-62-2	STRAIN RELIEF, HEYCO #1244	2
16	36-67-1	RECEPTACLE ASSEMBLY, GEN4 BAL	1
17	38-1148-1	CABLE ASSEMBLY, MOTOR CONTROL	1
18	37-628-1	WIRE ASSEMBLY, MOTOR	1
19	37-652-1	WIRE ASSEMBLY, GEN4 BALANCER POWER SWITCH	1
20	37-633-1	WIRE ASSEMBLY, BALANCER RELAY TO DRIVE	1
21	76-71-2	NUT-KEPS 8-32	6
22	232-277-1	ELECT ASSEMBLY-BAL RELAY (Consisting Of:)	1
23	14-1507-1	BRACKET ASSEMBLY, BALANCER RELAY	1
24	18-571-2	RELAY-BALANCER DC DRIVE	2
25	19-282-2	TERMINAL STRIP, 4 COND, 4 POLE	1
26	37-477-1	WIRE ASSEMBLY, 9700 POWER SWITCH (Not Illustrated)	1
27	37-656-1	WIRE ASSEMBLY, BALANCER RELAY POWER SPLIT (Not Illustrated)	1
28	75-171-2	RHMS 4-40 X 5/16 INCH	6
29	75-32-2	RHMS 8-32 X 3/8 INCH	2
30	37-655-1	WIRE ASSEMBLY, GEN4 BAL RELAY POWER	1
31	37-657-1	WIRE ASSEMBLY, BALANCER TERMINAL TO FILTER	1
32	75-802-2	SCREW, SELF-TAPPING 10-32 X 3/8 INCH	4
33	69-1409	COVER, ELECTRONICS, LEFT-HAND	1
34	75-682-2	SCREW, SELF-TAPPING 8-32 X 5/16 INCH GREEN	1
35	75-327-2	SCREW, SELF-TAPPING 8-32 X 1/2 INCH	2
36	69-1410	COVER, ELECTRONICS, RIGHT-HAND	1
37	75-24-2	ROUND HEAD MACHINE SCREW 6-32 X .38 INCH	1
38	45-1379-1	PCA, GEN2 DATA ACQUISITION (RFT)	1
OR	45-1379-1-2	PCA, GEN2 DATA ACQUISITION SMWT (GSP9200 TOUCH) (Not Shown)	1
39	113-258-2	BUSHING, PUSH ON TRIM	1.25 in



VIBRATION STRUCTURE

REFER TO NEXT SHEET FOR PARTS DESCRIPTION LISTING

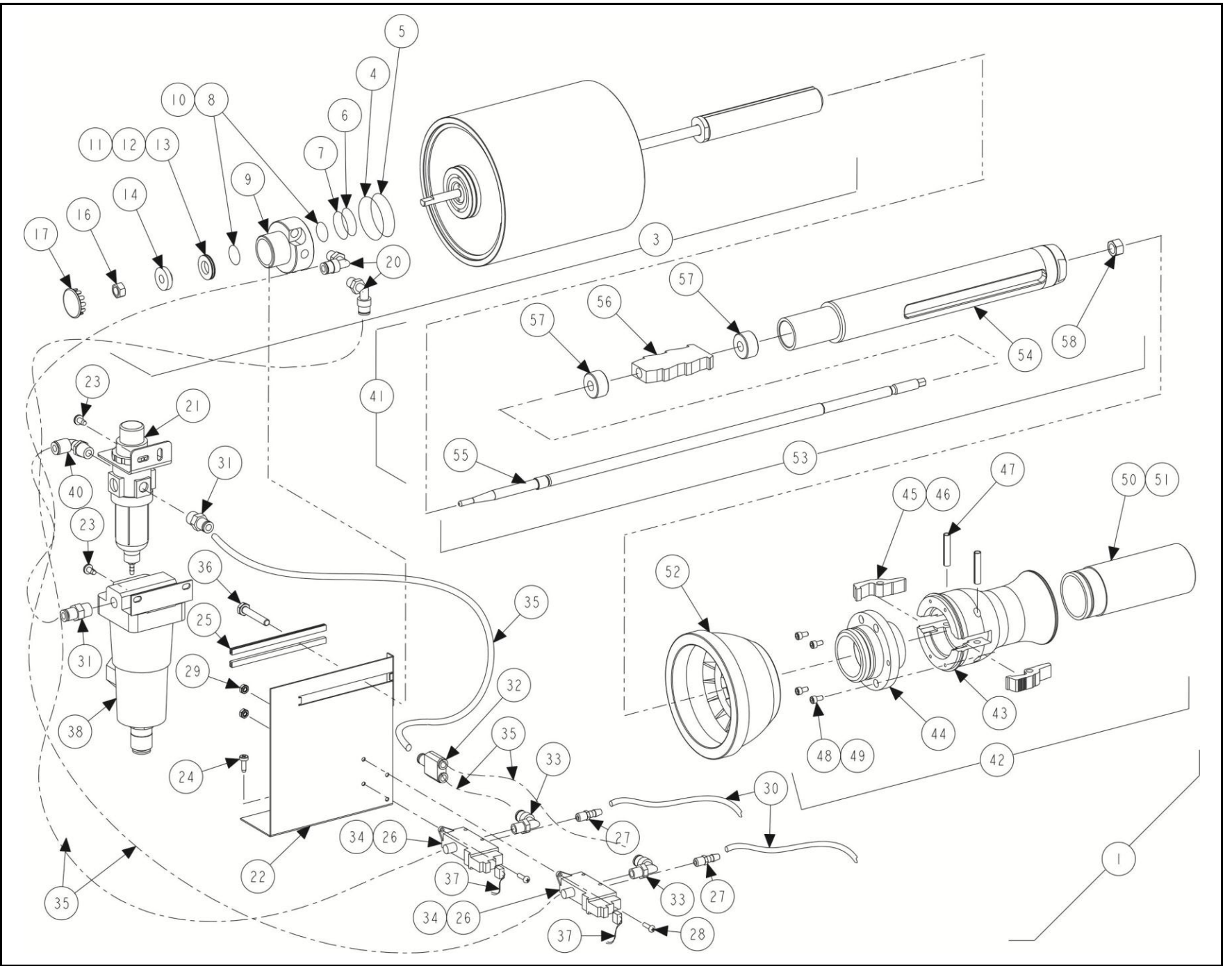
PARTS DESCRIPTION LISTING

Form 12-27e, 06-14a

Sheet 8 of 18

Index No.	Part Number	Description	Qty.
1	105-492-1	HOUSING, SPINDLE W/ LASER & ENCODER (Consists Of:)	1
AND	97-531-2	SHAFT - HOLLOW THREADED 40MM (Not for Auto Clamp) (Not Illustrated)	1
OR	97-587-1	SHAFT ASSEMBLY, OUTER 40 mm AUTO-CLAMP (Not Illus.) (See Sheet 8)	1
2	105-486-1	HOUSING, SPINDLE / DRIVE ASSEMBLY (Includes:)	1
3	41-134-2	RETAINER, SPRING COVER	1
4	112-112-2	SNAP RING, INTERNAL 115 mm	1
5	98-381-2	SPRING, CONE	1
6	75-73-2	ROUND HEAD MACHINE SCREW 8-32 X .31 INCH	2
7	45-1159-1	BALANCER SPINDLE ENCODER	1
8	75-272-2	SOCKET HEAD CAP SCREW 8-32 X .50 INCH, FULL-THREAD	2
9	105-493-1	HOUSING, LASER	1
10	107-118-2	PULLEY, DRIVEN WITH BALANCE BAND	1
11	76-470-2	NUT, AUTOCLAMP PULLEY NUT	1
12	98-416-2	SPRING, BRAKE RELEASE	1
13	106-155-2	SLEEVE, BRAKE ISOLATOR	1
14	164-89-1	LEVER, SPINDLE BRAKE ASSEMBLY	1
15	177-67-1-005	PIVOT, SPINDLE BRAKE ASSEMBLY	1
16	112-21-2	SNAP RING-#5103-75	1
17	75-177-2	ROUND HEAD MACHINE SCREW 1/4 - 20 X .88 INCH	2
18	77-71-2	WASHER, LOCK 1/4 INCH HELICAL SPRING	2
19	14-1132	BRACKET, FOOTBRAKE SWITCH	1
20	76-61-2	NUT, KEPS 10-32	2
21	75-414-2	PAN HEAD MACHINE SCREW 8-32 X 3/4 INCH	1
22	76-37-2	NUT, HEX 5/16-18	2
23	77-180-2	WASHER, FENDER 5/16 INCH	3
24	77-60-2	WASHER, LOCK 5/16 INCH HELICAL SPRING	1
25	18-454-2	SWITCH, MINI SINGLE-PULL DOUBLE-THROW 2.93 INCH LEVER	1
26	75-75-2	ROUND HEAD MACHINE SCREW 4-40 X 5/8 INCH	2
27	76-366-2	NUT, KEPS 4-40	2
28	38-1026-1	CABLE ASSEMBLY, SPINDLE LOC	1
29	129-232-1	MOTOR, DC, 9700 BALANCER (RFT) (Includes:)	1
OR	129-230-2	MOTOR-DC, 9200 BALANCER (GSP9200 TOUCH) (Includes:)	1
30	55-18-2	CORE, FERRITE (CYLINDRICAL) (Not Illustrated)	1
31	107-116-2	PULLEY, 9722 (RFT)	1
32	75-66-2	SOCKET SET SCREW 1/4-20 X 1/4 INCH CUP POINT (RFT)	2
33	126-38-2	BELT, POLY-V DRIVE (RFT)	1
OR	126-48-2	BELT, POLY-V DRIVE 330J10 (GSP9200 TOUCH)	1
34	77-66-2	WASHER, FLAT 3/8 TYPE A-W	3
35	74-68-2	HEX HEAD CAP SCREW 3/8-16 X 2.5 INCH	4
36	172-34-2	CAM, BELT TENSIONER	1
37	FIELD PURCHASE	ADHESIVE, THREAD LOCKING (LOCKTITE 222)	A/R
38	46-422-2	SPACER, MOTOR	4
39	74-454-2	SOCKET HEAD CAP SCREW, 3/8-16 X 7/8 INCH	4
40	76-428-2	NUT, 3/8-16, .615 INCH SQUARE X .25 INCH	4
41	77-297-2	WASHER, FLAT 3/8 INCH	8
42	38-837-1	CABLE ASSEMBLY, SPINDLE ENCODER GSP BALANCER	1
43	63-256-2	ROD, THREADED 3/8-24 X 5.5 INCH (RFT)	2
44	109-100-1	TRANSDUCER, 500# S-CELL WITH CONNECTIONS (RFT)	1
45	76-485-2	NUT, HEX 3/8-24 GRADE 8 (RFT)	6
46	FIELD PURCHASE	ADHESIVE, MEDIUM THREAD LOCKING (LOCKTITE 242)	A/R
47	46-686-005	SPACER, BRAKE PIVOT - A	1
48	109-155-1	TRANSDUCER ASSEMBLY, GEN IV BALANCER	2
49	75-239-2	SOCKET HEAD CAP SCREW 1/4-20 X 1.00 INCH (FULL-THREAD)	4
50	77-373-2	WASHER, FLAT 3/8 INCH, GRADE 8	4
51	76-485-2	NUT, HEX 3/8-24, GRADE 8	4
52	77-381-2	WASHER, .26 ID x .49 OD x .035 INCH	2

RFT AUTOCLAMP FEATURE
REFER TO NEXT SHEET FOR PARTS DESCRIPTION LISTING



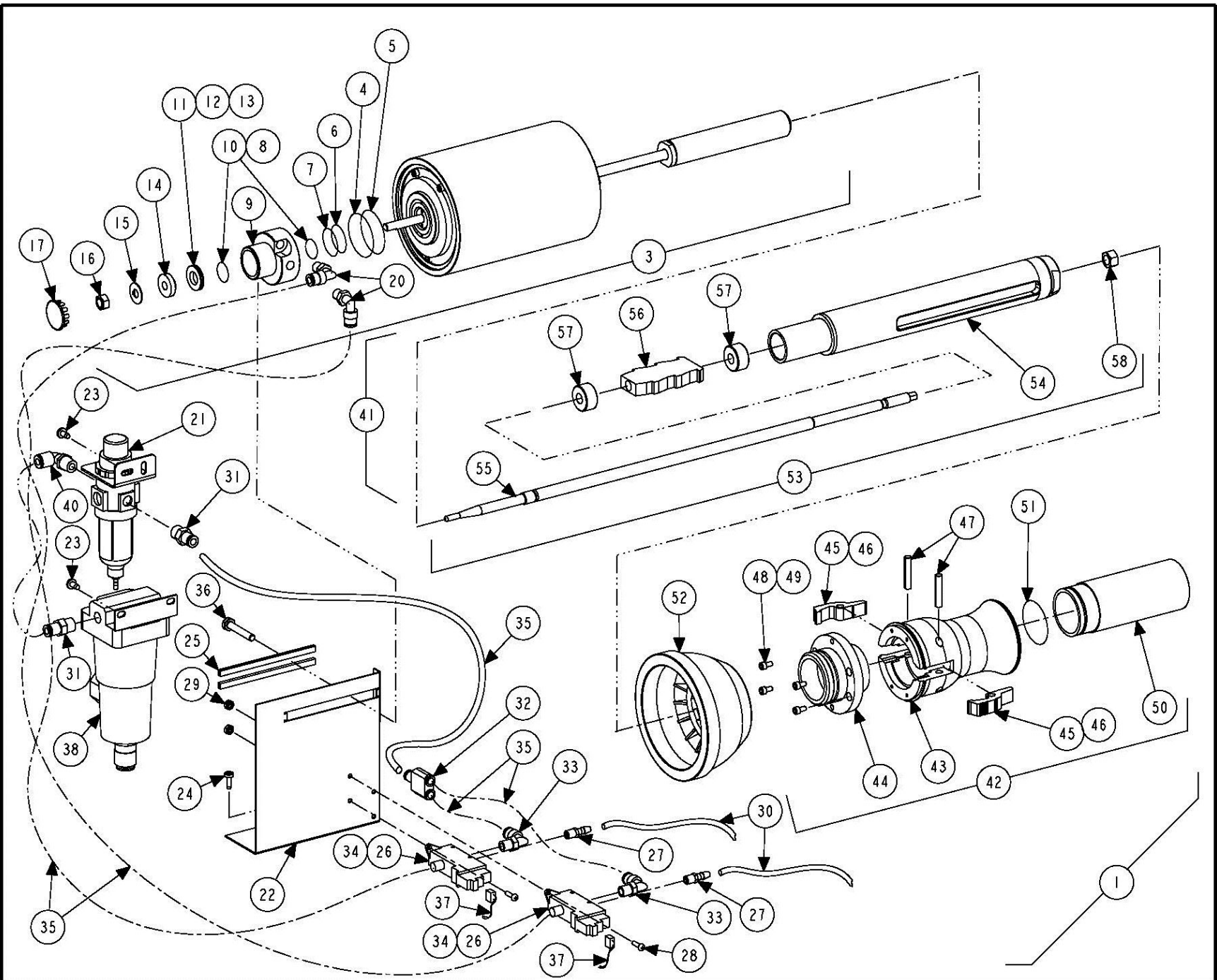
PARTS DESCRIPTION LISTING

Form 12-27e, 06-14a

Sheet 9 of 18

Index No.	Part Number	Description	Qty.
1	AUTOCLAMP	BASE, AUTO-CLAMP COMPONENTS (Consists Of:)	1
2	46-578-2	SPACER, CYLINDER AUTO-CLAMP	1
3	140-84-1	CYLINDER ASSEMBLY, AUTO-CLAMP III (Includes:)	1
4	124-170-2	SEAL, O RING AS568A-223	1
5	124-168-2	SEAL, ROTARY OUTER	1
6	124-169-2	SEAL, ROTARY INNER	1
7	124-171-2	SEAL, O RING AS568A-213	1
8	Field Purchase	LUBRICANT, 3 IN 1 OIL	A/R
9	178-45-1	COUPLING ASSEMBLY, ROTARY AUTOCLAMP (Includes:)	1
10	124-172-2	SEAL, O RING AS568A-011 VITON	2
11	77-341-2	WASHER, THRUST BEARING 1/2 ID	2
12	130-146-2	BEARING, THRUST, 1/2 INCH SHAFT	1
13	Field Purchase	LUBRICANT, EP-2 GREASE	A/R
14	113-265-2	BUSHING, COUPLING AUTOCLAMP	1
16	76-491-2	NUT, AUTOCLAMP ROTATING UNION	1
17	53-159-2	CAP, 1 INCH HOLE STEEL PLUG	1
20	145-324-2	FITTING, 1/8 NPT TO 1/4 INCH TUBE, 90	2
21	136-78-2	FILTER / REGULATOR, GSP9700	1
22	14-1195	BRACKET, AUTO-CLAMP CYLINDER	1
23	75-522-2	SCREW, SELF TAPPING 10-32 X .38 INCH	2
24	75-327-2	SCREW, SELF TAPPING 8-32 X .50 INCH	3
25	113-258-2	BUSHING, PUSH ON TRIM	8 1/4 in.
26	108-198-2	VALVE, PNEUMATIC SOLENOID	2
27	145-386-2	FITTING, BARBED 3/16 INCH INSIDE DIAMETER X 1/16 NPT	2
28	75-49-2	ROUND HEAD MACHINE SCREW 6-32 X 1/2 INCH	4
29	76-84-2	NUT, KEPS 6-32	4
30	16-844-2	TUBE, 5/16 INCH OUTSIDE DIAMETER, EXHAUST	38 in.
31	145-273-2	FITTING, 1/4 INCH HOSE X 1/4 NPT	1
32	145-325-2	FITTING, 1/4 INCH "Y"	1
33	145-324-2	FITTING, 1/8 NPT TO 1/4 INCH TUBE, 90	3
34	145-281-2	FITTING, 1/4 INCH HOSE X 1/8 NPT	2
35	16-843-2	TUBE, 1/4 INCH HOSE, FLEXIBLE	40 in.
36	75-55-2	HEX HEAD CAP SCREW 1/4-20 x 1 1/2 INCH	1
37	38-1094-1	CABLE, MANIFOLD ASSEMBLY	2
38	136-94-2	FILTER / REGULATOR, GSP AUTOCLAMP	1
39	137-96-1	HOSE ASSEMBLY, PNEUMATIC SUPPLY (Not Illustrated)	1
40	145-350-2	FITTING, 1/4 TUBE-1/4 NPT 90 ELBOW	1
41	20-2376-1	KIT BALANCER AUTO-CLAMP (Consists Of:)	1
42	184-86-1	HUB ASSEMBLY, AUTO-CLAMP (Consists Of:)	1
43	184-85-2	HUB, CLAMP CUP	1
44	217-61-2	COLLAR, AUTO-CLAMP CUP	1
45	144-105-2	LINK, PAWL AUTO-CLAMP	2
46	98-422-2	SPRING, TORSION AUTO-CLAMP	2
47	135-121-2	PIN, ROLL 1/4 INCH X 1 1/4 INCH	2
48	75-306-2	SOCKET HEAD CAP SCREW 8-32 X .31 INCH	4
49	Field purchase	LOCTITE # 271 OR PERMA BOND # HM128	A/R
50	106-156-2	SLEEVE, CLAMP	1
51	124-165-2	SEAL, O RING AS568A-030	1
52	175-353-1	ADAPTOR, BALANCER CUP WITH RETAINER	REF
53	97-587-1	SHAFT ASSEMBLY, OUTER 40 mm AUTO-CLAMP (Consists Of:)	1
54	97-586-2	SHAFT, OUTER AUTO-CLAMP	1
55	97-585-2	SHAFT, OUTER WITH HEX	1
56	99-132-2	RATCHET, AUTO-CLAMP	1
57	113-280-2	BUSHING, OUTER SHAFT	2
58	76-458-2	NUT, GRIP 3/8-24	2

NOTE: Item numbers 14, 18, 19, 50 and 51 are intentionally absent from list.

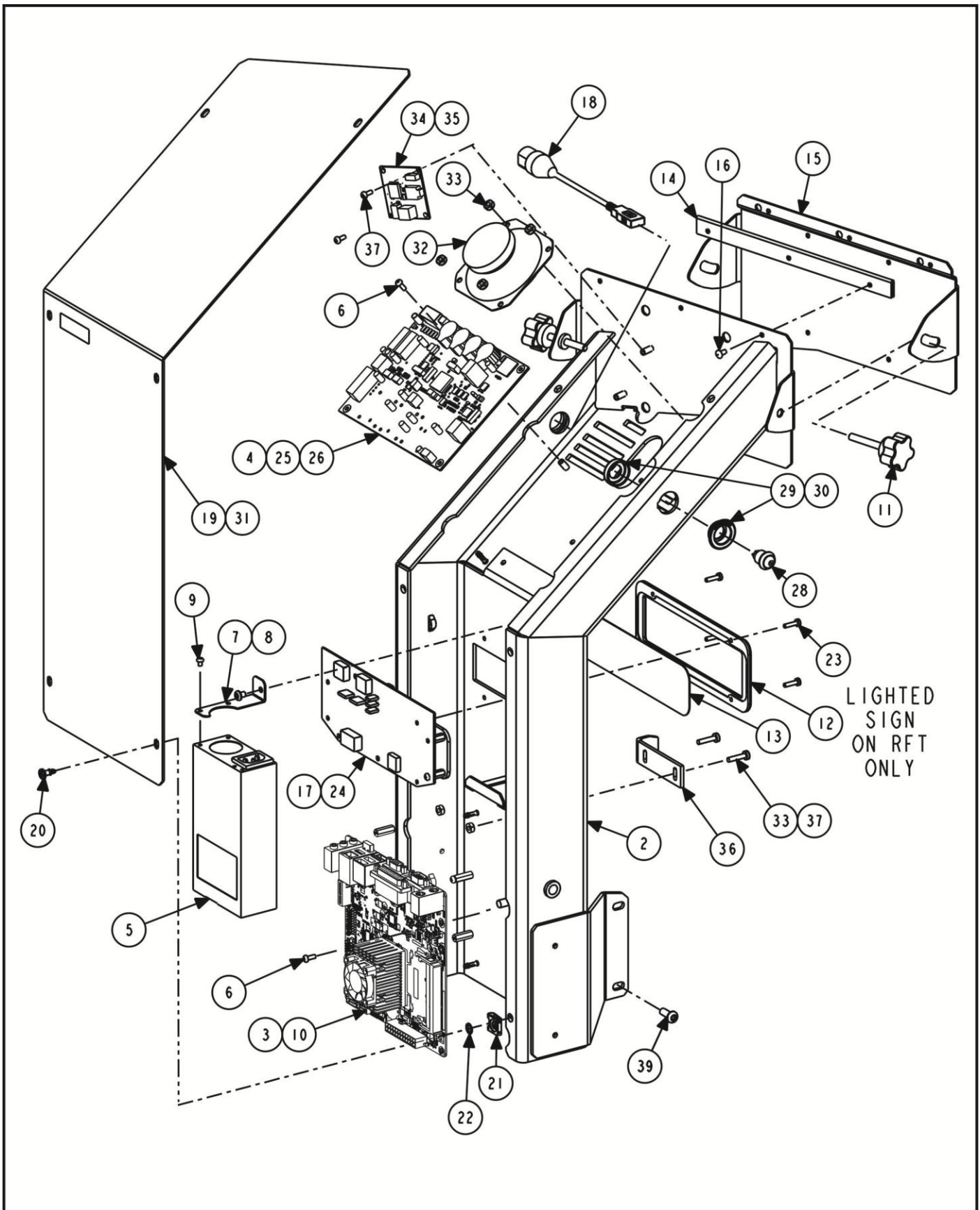


GSP9200 TOUCH AUTOCLAMP FEATURE

REFER TO NEXT SHEET FOR PARTS DESCRIPTION LISTING

PARTS DESCRIPTION LISTING

Index No.	Part Number	Description	Qty.
1	AUTOCLAMP	BASE(Consists Of:)	1
2	Not Used	Not Used (Not Illustrated)	-
3	140-86-1	CYLINDER ASSEMBLY, 4 INCH BORE AUTO-CLAMP (Includes:)	1
4	124-170-2	SEAL, O RING AS568A-223	1
5	124-168-2	SEAL, ROTARY OUTER	1
6	124-169-2	SEAL, ROTARY INNER	1
7	124-171-2	SEAL, O RING AS568A-213	1
8	Field Purchase	LUBRICANT, 3 IN 1 OIL	A/R
9	178-45-1	COUPLING ASSEMBLY, ROTARY AUTOCLAMP (Includes:)	1
10	124-172-2	SEAL, O RING AS568A-011 VITON	1
11	77-341-2	WASHER, THRUST BEARING 1/2 ID	2
12	130-146-2	BEARING, THRUST, 1/2 INCH SHAFT	1
13	Field Purchase	LUBRICANT, EP-2 GREASE	A/R
14	113-265-2	BUSHING, COUPLING AUTOCLAMP	1
15	77-340-2	WASHER, INTERNAL TAB 8MM DIN462	1
16	76-439-2	NUT, LOCK 5/16-18 CONICAL TOP	1
17	53-159-2	CAP, 1 INCH HOLE STEEL PLUG	1
18	NOT USED	NOT USED	-
19	NOT USED	NOT USED	-
20	145-324-2	FITTING, 1/8 NPT TO 1/4 INCH TUBE, 90	2
21	136-78-2	FILTER / REGULATOR, GSP9700	1
22	14-1108	BRACKET, AUTO-CLAMP CYLINDER	1
23	75-522-2	SCREW, SELF TAPPING 10-32 X .38 INCH	2
24	75-327-2	SCREW, SELF TAPPING 8-32 X .50 INCH	3
25	113-258-2	BUSHING, PUSH ON TRIM	8 1/4 in.
26	108-169-2	VALVE, PNEUMATIC SOLENOID	2
27	145-386-2	FITTING, BARBED 3/16 INCH INSIDE DIAMETER X 1/16 NPT	2
28	75-49-2	ROUND HEAD MACHINE SCREW 6-32 X 1/2 INCH	4
29	76-84-2	NUT, KEPS 6-32	4
30	16-844-2	TUBE, 5/16 INCH OUTSIDE DIAMETER, EXHAUST	38 in.
31	145-273-2	FITTING, 1/4 INCH HOSE X 1/4 NPT	1
32	145-325-2	FITTING, 1/4 INCH "Y"	1
33	145-324-2	FITTING, 1/8 NPT TO 1/4 INCH TUBE, 90	3
34	145-281-2	FITTING, 1/4 INCH HOSE X 1/8 NPT (Not Illustrated)	2
35	16-843-2	TUBE, 1/4 INCH HOSE, FLEXABLE	40 in.
36	75-55-2	HEX HEAD CAP SCREW 1/4-20 x 1 1/2 INCH	1
37	38-948-1	CABLE, MANIFOLD ASSEMBLY	2
38	136-94-2	FILTER / REGULATOR, GSP AUTOCLAMP	1
39	137-96-1	HOSE ASSEMBLY, PNEUMATIC SUPPLY (Not Illustrated)	1
40	145-350-2	FITTING, 1/4 TUBE-1/4 NPT 90 ELBOW	1
41	20-2376-1	KIT BALANCER AUTO-CLAMP (Consists Of:)	1
42	184-86-1	HUB ASSEMBLY, AUTO-CLAMP (Consists Of:)	1
43	184-85-2	HUB, CLAMP CUP	1
44	217-61-2	COLLAR, AUTO-CLAMP CUP	1
45	144-105-2	LINK, PAWL AUTO-CLAMP	2
46	98-422-2	SPRING, TORSION AUTO-CLAMP	2
47	135-121-2	PIN, ROLL 1/4 INCH X 1 1/4 INCH	2
48	75-306-2	SOCKET HEAD CAP SCREW 8-32 X .31 INCH	4
49	Field purchase	LOCTITE # 271 OR PERMA BOND # HM128	A/R
50	106-156-2	SLEEVE, CLAMP	1
51	124-165-2	SEAL, O RING AS568A-030	1
52	175-353-1	ADAPTOR, BALANCER CUP WITH RETAINER	REF
53	97-587-1	SHAFT ASSEMBLY, AUTO-CLAMP OUTER (Consists Of:)	1
54	97-586-2	SHAFT, OUTER AUTO-CLAMP	1
55	97-585-2	SHAFT, OUTER WITH HEX	1
56	99-132-2	RATCHET, AUTO-CLAMP	1
57	113-280-2	BUSHING, OUTER SHAFT	2
58	76-458-2	NUT, GRIP 3/8-24	2



SCREEN SUPPORT

REFER TO NEXT SHEET FOR PARTS DESCRIPTION LISTING

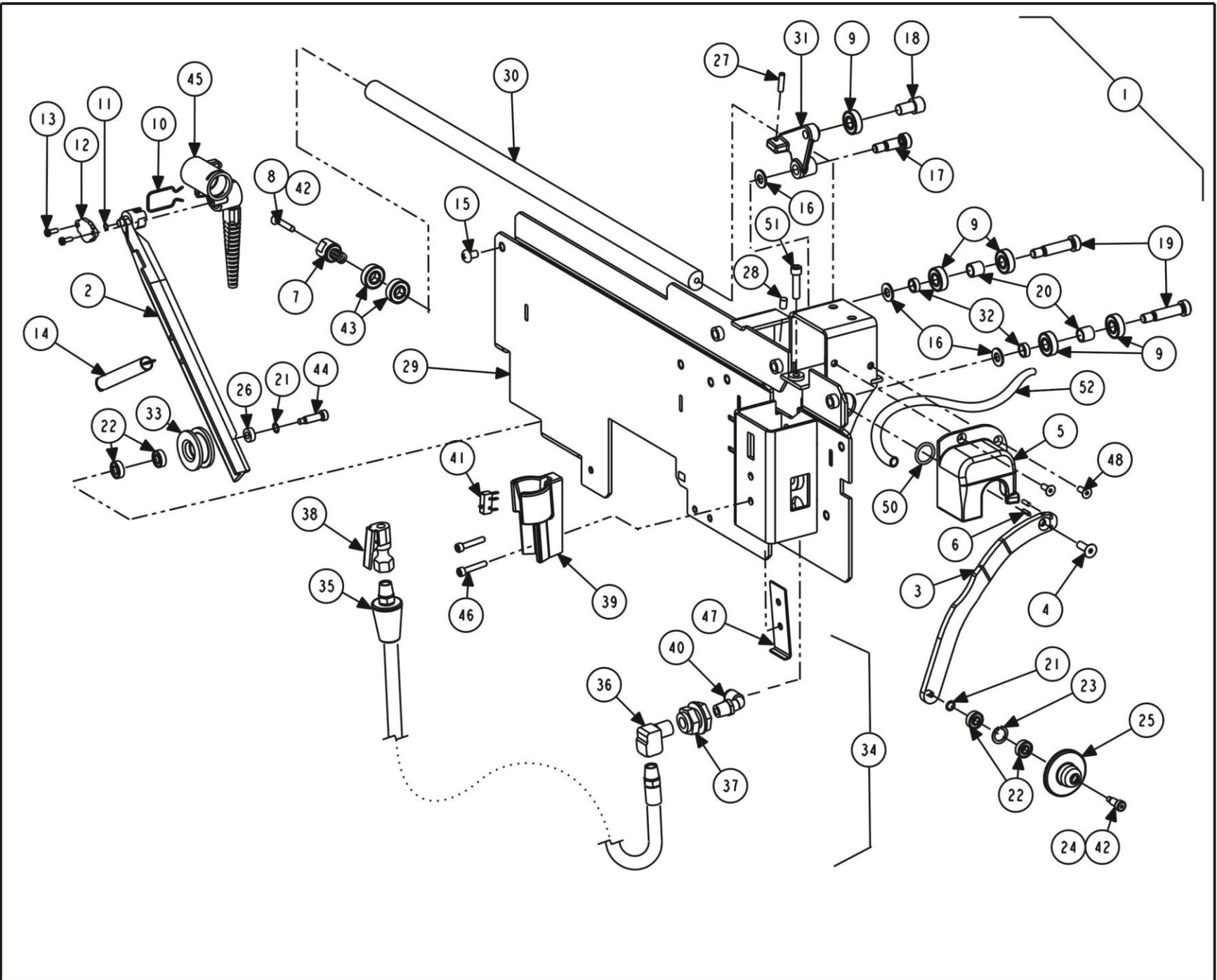
PARTS DESCRIPTION LISTING

Index No.	Part Number	Description	Qty.
1	11-1435-1	SUPPORT ASSEMBLY, TOUCH DISP, RFT (Consisting Of:)	
OR	11-1460-1	SUPPORT ASSEMBLY, TOUCH DISP, SWT (TOUCH) (Not III) (Consisting Of:)	1
2	11-1434-1-005	SUPPORT ASSEMBLY, TOUCH DISPLAY, GEN4 (RFT)	
OR	11-1495-1-005	SUPPORT ASSEMBLY, TOUCH DISPLAY, SWT (TOUCH) (Not Illustrated)	1
3	45-1499-2 *	ADVANTECH MOTHERBOARD	1
4	45-1337-1-1	PCA, ROCKHOPPER2 USB INTF	1
5	232-253-2 *	FLEX ATX 150 WATT POWER SUPPLY	1
6	75-24-2	ROUND HEAD MACHINE SCREW 6-32 X .38 INCH	2
7	14-1307	BRACKET, FLEX ATX	1
8	75-582-2	SOCKET BUTTON HEAD CAP SCREW 10-32 X .25 INCH	1
9	75-332-2	ROUND HEAD MACHINE SCREW 6-32 X 3/16 INCH	2
10	46-579-2	SPACER, NYLON PUSH IN .437 INCH HIGH	1
11	34-208-2	KNOB, 1/4-20 X 1/2 INCH	2
12	223-82-2	RING, TRIM, NAMEPLATE	
13	24-178-2 **	NAMEPLATE, RFT BALANCER (HUNTER) **	
14	160-56-2	HINGE, MONITOR, TOUCH	1
15	51-2587-005	PLATE, MONITOR, HINGED	1
16	48-103-2	RIVET, BLIND 5/32 X 1/4 INCH, BLACK	6
17	190-193-1	SIGN, LIGHTED, DISPLAY SUPPORT	
18	38-1082-2	CABLE ASSEMBLY USB BULKHEAD	1
19	69-1372-005	COVER, DISPLAY SUPPORT, TOUCH	1
20	75-775-2	SCREW, QUARTER TURN, SIZE 280, PR	6
21	76-490-2	NUT, QUARTER TURN, CLIP-ON	6
22	41-205-2	RETAIN, QUARTER TURN, 82 SERIES	6
23	75-735-2	PAN HEAD MACHINE SCREW 6-32 X 5/16 INCH	
24	38-1185-2	CABLE, 5 PIN USB HDR F/F 24 INCH (TO USB ON ITEM 3)	1
25	38-1160-1	CABLE ASSEMBLY, GSP INTERCONNECT (TO 45-1379-1 IN TUB)	1
26	37-623-1	WIRE ASM, GEN4 BAL DC POWER 38 INCH (TO 45-1379-1 IN TUB)	1
27	94-45-2	TIE, CABLE (BLACK) (Not Illustrated)	2
28	18-565-1	SWITCH ASSEMBLY, BALANCER MOBO POWER	1
29	105-639-2	HOUSING, POWER BUTTON, OUTER	1
30	105-640-2	HOUSING-POWER BUTTON, INNER	1
31	128-1399-2	DECAL, DISPLAY COVER GEN IV	1
32	109-173-1	SPEAKER, ASSEMBLY 3.5 INCH WITH CABLE (RFT Only)	-
33	76-71-2	NUT-KEPS 8-32 (RFT Only)	2
34	45-1451-1	MONO AUDIO AMP (RFT Only)	-
35	37-651-1	WIRE ASSEMBLY AUDIO AMP POWER (RFT Only)	-
36	216-118-005	HOOK, WEIGHT TRAY	1
37	75-414-2	PAN HEAD MACHINE SCREW 8-32X3/4 INCH	2
39	75-758-2	SOCKET BUTTON HEAD CAP SCREW 1/4-20 X .63 INCH	4
AND	76-414-2	NUT-HEX INSERT 1/4-20	4
40	227-105-2	DISPLAY, 22 INCH LCD WITH TOUCH (Not Illustrated)	1
41	75-668-2	PAN HEAD MACHINE SCREW M4 X .7 X 10 mm (Not Illustrated)	2

* If required to replace an intel board with an Advantech due to parts availability, kit 20-2895-1 may be required. Kit 20-2895-1 contains Advantech board and an ATX power supply extender cable, 38-1222-2. Refer to kit installation instructions, Form 6738-T, for details.

** Customized signs are available for some OEMs and national accounts. Part numbers and description of signs are listed below:

24-182-2	KIA	24-194-2	ACURA CANADA	24-203-2	MOPAR
24-183-2	SUBARU	24-195-2	HONDA CANADA	24-204-2	ACURA DOMESTIC
24-184-2	HYUNDAI	24-196-2	ROTUNDA	24-205-2	HONDA DOMESTIC
24-187-2	BMW	24-197-2	BELLE TIRE	24-213-2	TIRECRAFT
24-188-2	JLR (Jaguar-Land Rover)	24-199-2	LEXUS	24-214-2	PORSCHE CANADA
24-189-2	MERCEDES-BENZ	24-200-2	TOYOTA	24-219-2	SENTURY
24-191-2	GM	24-201-2	NISSAN TM		
24-193-2	VAG	24-202-2	INFINITI TM		



RFT INNER DATASET ARM, 103-249-1

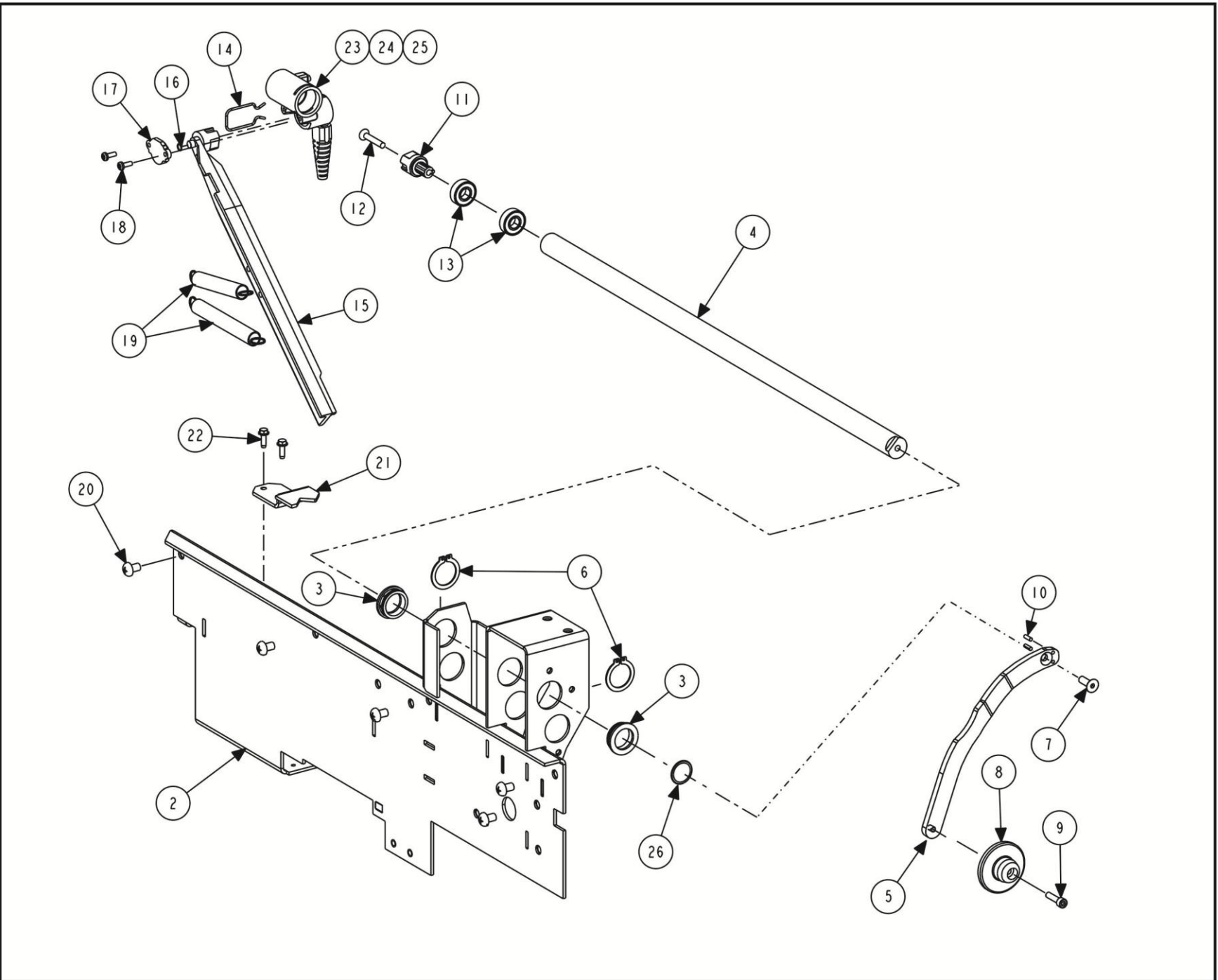
REFER TO NEXT SHEET FOR PARTS DESCRIPTION LISTING

PARTS DESCRIPTION LISTING

Form 12-27e, 06-14a

Sheet 12 of 18

Index No.	Part Number	Description	Qty.
1	103-249-1	ARM ASSEMBLY, INNER DATASET, RFT, SMALL (Consists Of:)	1
2	176-52-1	LOCATOR ASSEMBLY, MAGNET	1
3	103-155-2	ARM, INNER DATASET SMALL WHEEL	1
4	75-68-3	FLAT HEAD SOCKET CAP SCREW 1/4-20X.75 INCH	1
5	69-1201-2	COVER, SMALL INNER DATASET	1
6	135-406-2	PIN-ROLL 1/8 X 3/8 INCH	2
7	176-50-1	LOCATOR ASSEMBLY, MAGNET	1
8	75-667-3	SCREW, FLAT HEAD MACHINE SCREW 10-32 X 1.125 INCH	1
9	130-136-2	BEARING, BALL, 3/8 INNER DIAMETER X 7/8 INCH OUTER DIAMETER	5
10	98-415-2	SPRING, DATASET CLIP	1
11	77-323-2	WASHER-WAVE SPRING .242 X .194 INCH	1
12	53-153-2	CAP, INNER DATASET	1
13	75-359-2	PAN HEAD SHEET METAL SCREW 6 X 3/8 INCH TRILOBULAR	2
14	98-331-2	SPRING, EXTENSION .500 INCH OUTER DIAMETER	1
15	75-90-3	ROUND HEAD MACHINE SCREW 1/4-20 X 3/8 INCH	5
16	77-331-2	WASHER, .318 INNER DIAMETER X .73 OUTER DIAMETER X .057 INCH THICK	3
17	74-456-2	BOLT, SHOULDER 3/8 X 3/4 INCH	1
18	74-220-2	SOCKET HEAD CAP SCREW 3/8-16 X .63 INCH (Full-Thread)	1
19	74-366-2	BOLT, SHOULDER 3/8 X 1.25 INCH, GRADE 5	2
20	46-429-2	SPACER, ROLLER	2
21	77-140-2	WASHER, SPRING 1/4 INCH WAVE	2
22	130-142-2	BEARING, BALL 1/4 INNER DIAMETER X 5/8 INCH OUTER DIAMETER	4
23	112-86-2	SNAP RING, TRUARC 5008-62 ZD	1
24	75-633-3	SCREW, SHOULDER 1/4 X .439 INCH	1
25	111-102-2	ROLLER, INNER DATASET	1
26	46-583-2	SPACER, 1/4 INNER DIAMETER X 1/2 OUTER DIAMETER X 3/16 INCH LONG	1
27	75-601-2	SOCKET SET SCREW 10-24 X .75 INCH, OVAL POINT LOCK	1
28	98-333-2	SPRING, COMPRESSION .240 INCH OUTER DIAMETER	1
29	11-1523-1-005	SUPPORT ASSEMBLY, INNER DATASET, RFT SMALL	1
30	97-549-2	SHAFT, INNER DATASET SMALL	1
31	57-767-005	BAR, UPPER ROLLER	1
32	46-582-2	SPACER, .375 INNER DIAMETER X .173 INCH	2
33	111-123-2	ROLLER, LATERAL V	1
34	105-648-1	HOUSING ASSEMBLY, BALANCER TIRE FILL (Consists Of:)	1
35	137-149-1	HOSE ASSEMBLY-BALANCER TIRE FILL (Includes)	1
36	145-241-2	FITTING-1/4 BRASS STREET ELBOW	1
37	145-224-2	COUPLING-BULKHEAD	1
38	145-341-2	FITTING, AIR CHUCK LOCK-ON OPEN	1
39	105-645-1	HOUSING - TC INFLATION HOLSTER	1
40	145-350-2	FITTING-1/4 TUBE-1/4 NPT 90 ELBOW	1
41	37-481-1	WIRE ASSEMBLY-GSP9700 TIRE FILL	1
42	Field Purchase	ADHESIVE, THREAD LOCKING (Loctite #222 or PermaBond #LM113)	A/R
43	130-195-2	BEARING, BALL 3/8 INNER DIAMETER X 7/8 INCH OUTER DIAMETER	2
44	75-675-2	SCREW, SHOULDER 1/4 X 3/4 INCH	1
45	125-445-3	SENSOR ASSEMBLY, INNER DATASET	1
46	75-436-2	SOCKET HEAD CAP SCREW 10-32 X 1 INCH	2
47	14-1514-1	BRACKET ASSEMBLY, INFLATION MOUNT	1
48	15-36-2	TUBING, SPIRAL WRAP (Not Illustrated)	A/R
49	75-386-2	FLAT HEAD SOCKET CAP SCREW 10-32 X .5 INCH	3
50	124-102-2	SEAL, O-RING, #2-208	1
51	75-755-3	SOCKET HEAD CAP SCREW 1/4-20 X 1 INCH COATED	1
52	16-423-2	TUBE, AIR .172 INNER DIAMETER	20 IN.



GSP9200 TOUCH INNER DATASET ARM, 103-248-1

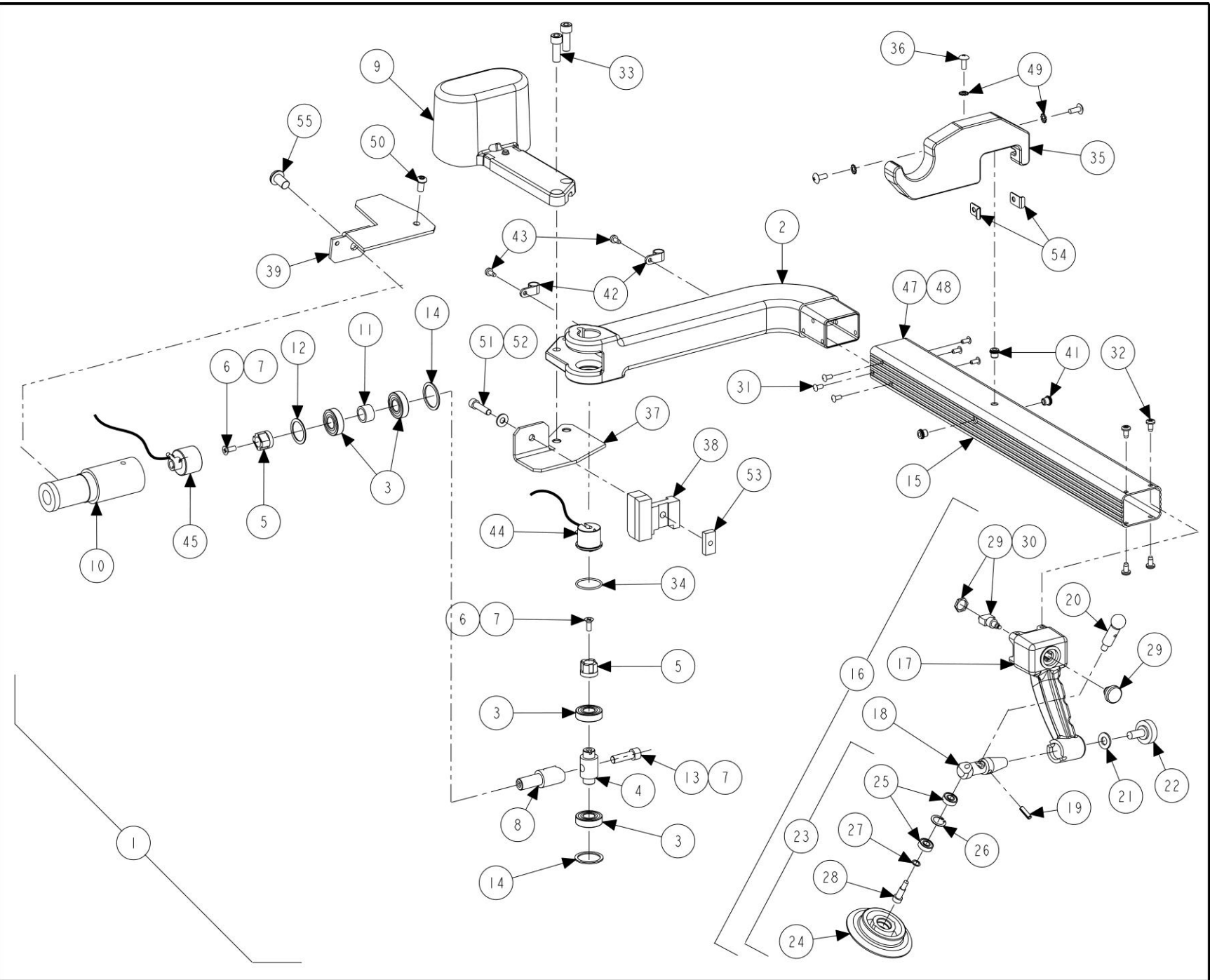
REFER TO NEXT SHEET FOR PARTS DESCRIPTION LISTING

PARTS DESCRIPTION LISTING

Form 12-27e, 06-14a

Sheet 13 of 18

Index No.	Part Number	Description	Qty.
1	103-248-1	ARM ASSEMBLY, INNER DATASET SMALL WHEEL (Consisting Of:)	1
2	11-1520-1-005	SUPPORT ASSEMBLY, SWT INNER DATASET	1
3	130-184-2	BEARING-INNER DATASET	2
4	97-548-2	SHAFT, DSP EXPORT INNER DATASET	1
5	103-155-2	ARM, INNER DATASET SMALL WHEEL	1
6	112-88-2	SNAP RING-TRUARC 5100-100	2
7	75-68-3	FLAT HEAD SOCKET CAP SCREW 1/4-20 X .75 INCH	1
8	111-101-2	ROLLER, INNER ARM DATASET	1
9	75-83-3	SOCKET HEAD CAP SCREW 10-32 X .75 INCH (Full-threaded)	1
10	135-406-2	PIN, ROLL 1/8 X 3/8	2
11	176-50-1	LOCATOR ASSEMBLY, MAGNET	1
12	75-667-3	SCREW-FLAT HEAD MACHINE SCREW 10-32 X 1.125 INCH	1
13	130-195-2	BEARING, BALL 3/8 ID X 7/8 INCH OD	2
14	98-415-2	SPRING, DATASET CLIP	1
15	176-52-1	LOCATOR ASSEMBLY, MAGNET	1
16	77-323-2	WASHER, WAVE SPRING .242 X .194 INCH	1
17	53-153-2	CAP, INNER DATASET	1
18	75-359-2	PAN HEAD SHEET METAL SCREW 6 X 3/8 INCH TRILOBULAR	2
19	98-331-2	SPRING, EXTENSION .500 INCH OD	2
20	75-90-3	ROUND HEAD MACHINE SCREW 1/4-20 X 3/8 INCH	6
21	177-63-005	PIVOT, INNER DATASET PAINTED	1
22	75-327-2	SCREW, SELF-TAPPING 8-32 X 1/2 INCH	2
23	125-445-3	SENSOR ASSEMBLY, INNER DATASET	1
24	94-11-2	TIE, CABLE	2
25	15-36-2	TUBING, SPIRAL WRAP	A/R
26	124-102-2	SEAL, O-RING, #2-208	1
27	162-57-2	ADHESIVE, RETAINING COMPOUND (Not Shown)	A/R



RFT OUTER DATASET ARM, 103-153-1

REFER TO NEXT SHEET FOR PARTS DESCRIPTION LISTING

PARTS DESCRIPTION LISTING

Form 12-27e, 06-14a

Sheet 14 of 18

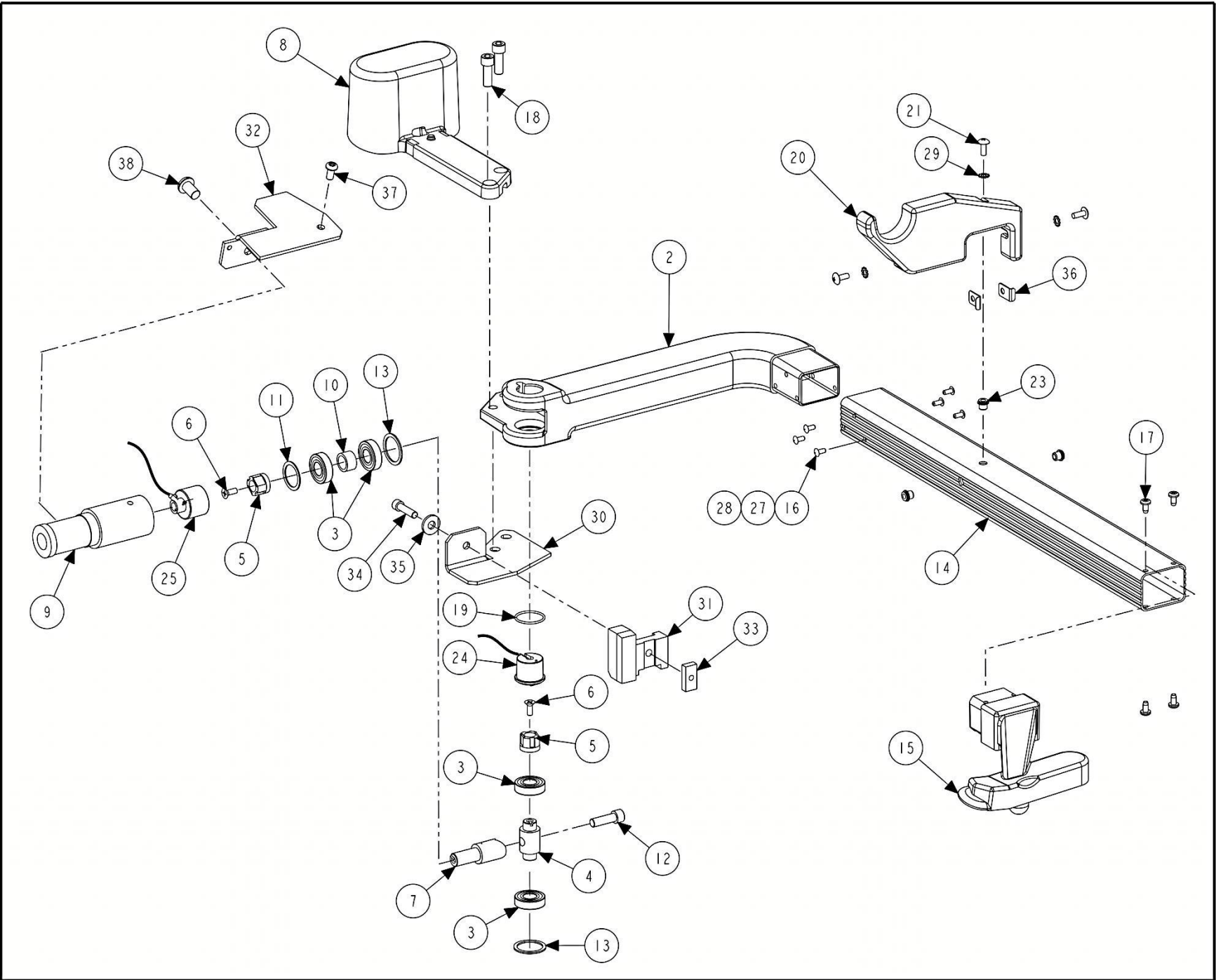
Index No.	Part Number	Description	Qty.
1	103-153-1	ARM, OUTER DATASET ASSEMBLY (Consisting Of:)	1
2	105-475-1-011	HOUSING, DATASET ARM	1
3	130-172-2	BEARING, SEALED BALL	4
4	97-574-2 *	SHAFT, OUTER LATERAL (for 5/16 inch screw)	1
5	176-49-1	LOCATOR ASSEMBLY, MAGNET	2
6	75-508-3	FLAT HEAD MACHINE SCREW 10-32 X .50 INCH	2
7	Field Purchase	ADHESIVE, THREAD LOCKING LOCTITE #222 OR PERMABOND #LM113	A/R
8	97-573-2 *	SHAFT, RADIAL (for 5/16 inch screw)	1
9	65-70-005	WEIGHT, DATASET COUNTER BALANCE	1
10	105-479-2	HOUSING, OUTER RADIAL BEARING	1
11	46-573-2	SPACER, OUTER DATASET	1
12	77-324-2	WASHER, WAVE SPRING 1.102 X .85 INCH	1
13	75-705-3 *	SOCKET HEAD CAP SCREW 5/16-18 X 1.00 INCH (Full-Thread)	1
14	112-124-2	SNAP RING, INTERNAL 1.125 INCH	2
15	103-152-011	ARM, OUTER DATASET	1
16	111-115-1	ROLLER / HANDLE ASSEMBLY, DATA SET (Consisting Of:)	1
17	142-136-011	HANDLE, DATASET ARM	1
18	97-381-2	SHAFT, ROLLER/PIVOT	1
19	135-227-2	PIN, ROLL 3/16 X 5/8 INCH	1
20	104-105-2	GUIDE, RIM RUNOUT GAGE	1
21	77-20-2	WASHER, FLAT 5/16 INCH	1
22	34-129-2	KNOB, WITH 5/16 INCH SOCKET HEAD CAP SCREW	1
23	111-69-1	ROLLER ASSEMBLY, DATA SET (Consisting Of:)	1
24	111-68-2	ROLLER, OUTER DATASET	1
25	130-142-2	BEARING, BALL 1/4 INNER DIAMETER X 5/8 INCH OUTER DIAMETER	2
26	112-86-2	SNAP RING, TRUARC 5008-62 ZD	1
27	77-140-2	WASHER, SPRING 1/4 INCH WAVE	1
28	75-521-2	SCREW, SHOULDER 1/4 X .50 INCH	1
29	18-494-1	SWITCH ASSEMBLY, OUTER DATASET ARM	1
30	Field Purchase	ADHESIVE, LOCTITE #242 OR PERMABOND #MM115	A/R
31	48-57-2	RIVET, BLIND 5/32 X 1/4 INCH	6
32	75-522-2	SCREW, SELF-TAPPING 10-32 X .38 INCH	4
33	74-376-2	SOCKET HEAD CAP SCREW, 5/16-18 X 7/8 INCH	2
34	124-117-2	O-RING .989 INNER DIAMETER X .070 INCH CS BUNA-N	1
35	228-72-2	STOP, OUTER DATASET	1
36	75-312-2	TRUSS HEAD MACHINE SCREW 10-32 X 1/2 INCH	3
37	11-1363-1-005	SUPPORT ASSEMBLY, OUTER DATASET STOP	1
38	121-269-2	BLOCK, PIVOT STOP	1
39	228-79-005	STOP, DATASET PIVOT	1
40	94-11-2	TIE-CABLE (Not Illus.)	3
41	76-352-2	INSERT THREADED #10-32 STEEL	3
42	12-181-2	CLAMP, CABLE 3/8 INCH BLACK NYLON	2
43	75-474-2	SCREW, SELF-TAPPING 8-32 X .38 INCH	2
44	125-393-1	SENSOR, HALL OUTER DATASET LATERAL	1
45	125-394-1	SENSOR, HALL OUTER DATASET RADIAL	1
46	70-143-2	HARNESS, SPIRAL WRAP .25 INCH OD BLACK (Not Illus.)	6
47	Field Purchase	ADHESIVE, LOCTITE DEPEND 330 NO-MIX LOC	A/R
48	Field Purchase	ADHESIVE, LOCTITE DEPEND 330 ACTIVATOR	A/R
49	77-351-2	WASHER, #10 EXTERNAL TOOTH WASHER	3
50	75-481-2	SOCKET BUTTON HEAD CAP SCREW 1/4-20 X .50 INCH	1
51	75-239-2	SOCKET HEAD CAP SCREW 1/4-20 X 1.00 INCH	1
52	77-67-2	WASHER, FLAT 1/4 INCH	1
53	76-480-2	NUT 1/4-20 PIVOT RETAINER	1
54	41-198-2	RETAINER, OUTER DATASET STOP	2
55	74-411-2	SOCKET BUTTON HEAD CAP SCREW 3/8-16 X .63 INCH	1

* NOTE: Identified items are also contained in Outer Dataset Shaft Kit 20-2294-1 used to upgrade to to 5/16 inch screw (item 13).

HUNTER
Engineering Company

11250 HUNTER DRIVE BRIDGETON, MO 63044

PPP-Paint Code Required
A/R-As Required
REF-Reference



GSP9200 TOUCH OUTER DATASET ARM, 103-180-1

REFER TO NEXT SHEET FOR PARTS DESCRIPTION LISTING

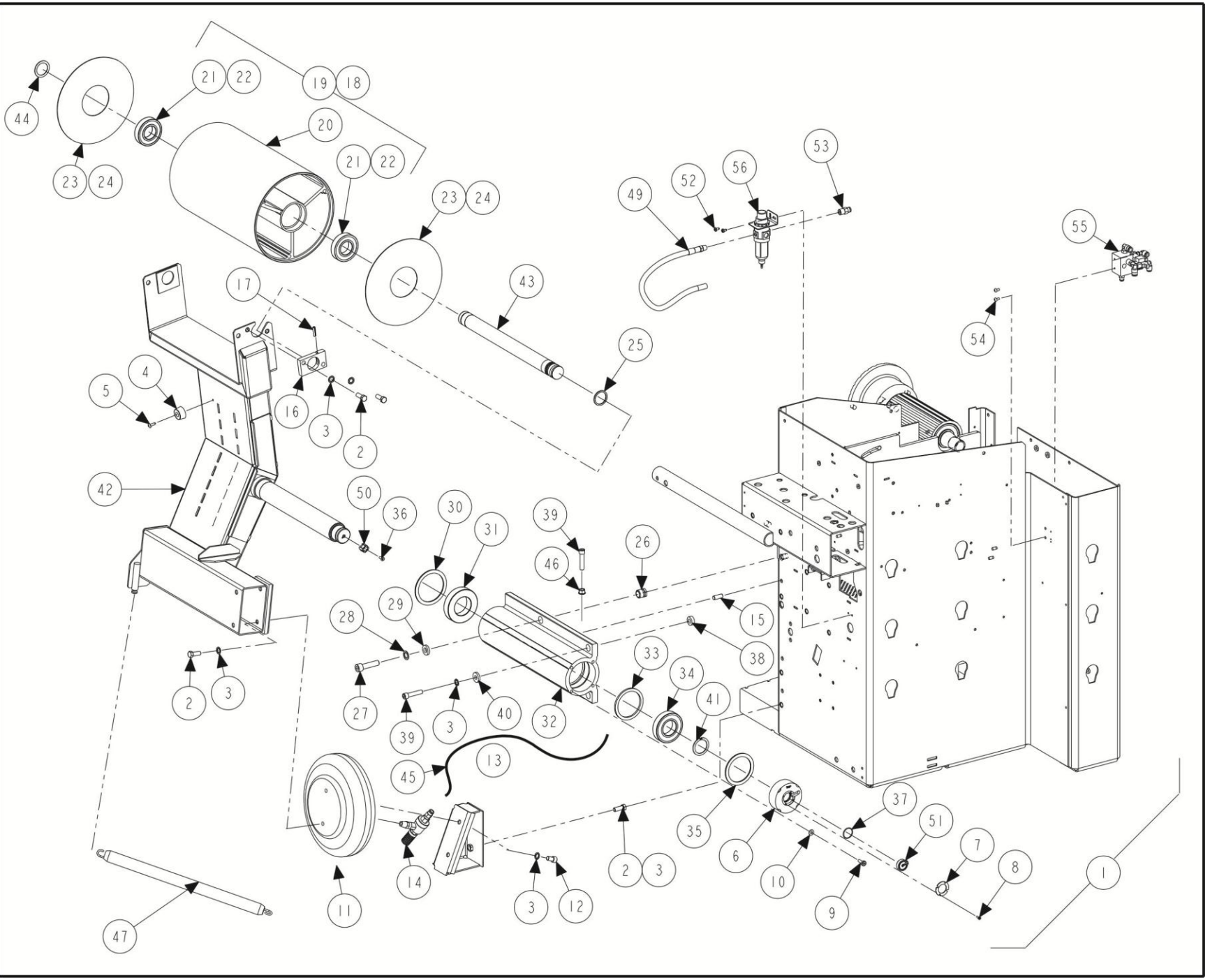
PARTS DESCRIPTION LISTING

Form 12-27e, 06-14a

Sheet 15 of 18

Index No.	Part Number	Description	Qty.
1	103-180-1	OUTER ARM 9600 (Consists Of:)	1
2	105-475-011	HOUSING, DATASET ARM	1
3	130-172-2	BEARING, SEALED BALL	4
4	97-574-2 *	SHAFT, OUTER LATERAL	1
5	176-49-1	LOCATOR ASSEMBLY, MAGNET	2
6	75-508-3	FLAT HEAD MACHINE SCREW 10-32 X .50 INCH	2
7	97-573-2 *	SHAFT, RADIAL	1
8	65-70-005	WEIGHT, DATASET COUNTERBALANCE	1
9	105-479-2	HOUSING, OUTER RADIAL BEARING	1
10	46-573-2	SPACER, OUTER DATASET	1
11	77-324-2	WASHER, WAVE SPRING 1.102 X .85 INCH	1
12	75-705-3 *	SOCKET HEAD CAP SCREW 5/16-18 X 1 INCH (Full-Thread)	1
13	112-124-2	SNAP RING, INTERNAL 1.125 INCH	2
14	103-183-011	ARM, OUTER DATASET	1
15	95-47-2	POINTER, OUTER DATASET DSP9600	1
16	48-57-2	RIVET, BLIND 5/32 X 1/4 INCH	6
17	75-522-2	SCREW, SELF-TAPPING 10-32 X .38 INCH	4
18	74-376-2	SOCKET HEAD CAP SCREW 5/16-18 X 7/8 INCH	2
19	124-117-2	O-RING .989 INCH I.D. X .070 INCH COUNTER SINK BUNA-N	1
20	228-64-2	STOP, OUTER DATASET 9600	1
21	75-312-2	TRUSS HEAD MACHINE SCREW 10-32 X 1/2 INCH	3
22	94-11-2	TIE-CABLE (Not Illustrated)	3
23	76-352-2	INSERT THREADED #10-32 STEEL	3
24	125-393-1	SENSOR, HALL OUTER DATASET LATERAL	1
25	125-394-1	SENSOR, HALL, OUTER DATASET RADIAL	1
26	70-143-2	HARNES, SPIRAL WRAP .25 INCH O.D. BLACK (Not Illustrated)	8 IN.
27	Field Purchase	ADHESIVE, DEPEND 330 NO-MIX LOC	A/R
28	Field Purchase	ADHESIVE, DEPEND 330 ACTIVATOR	A/R
29	77-351-2	WASHER, #10 EXTERNAL TOOTH WASHER	3
30	11-1363-1-005	SUPPORT ASSEMBLY, OUTER DATASET STOP	1
31	121-269-2	BLOCK, PIVOT STOP	1
32	228-79-005	STOP, DATASET PIVOT	1
33	76-480-2	NUT 1/4-20 PIVOT RETAINER	1
34	75-239-2	SOCKET HEAD CAP SCREW 1/4-20 X 1.00 INCH (Full-Thread)	1
35	77-67-2	WASHER, FLAT 1/4 INCH	1
36	41-198-2	RETAINER, OUTER DATASET STOP	2
37	75-481-2	SOCKET BUTTON HEAD CAP SCREW 1/4-20 X .50 INCH	1
38	74-411-2	SOCKET BUTTON HEAD CAP SCREW 3/8-16X.63 INCH (Full-Thread)	1

* NOTE: Identified items are also contained in Outer Dataset Shaft Kit 20-2294-1 used to upgrade to 5/16 inch screw (item 12).



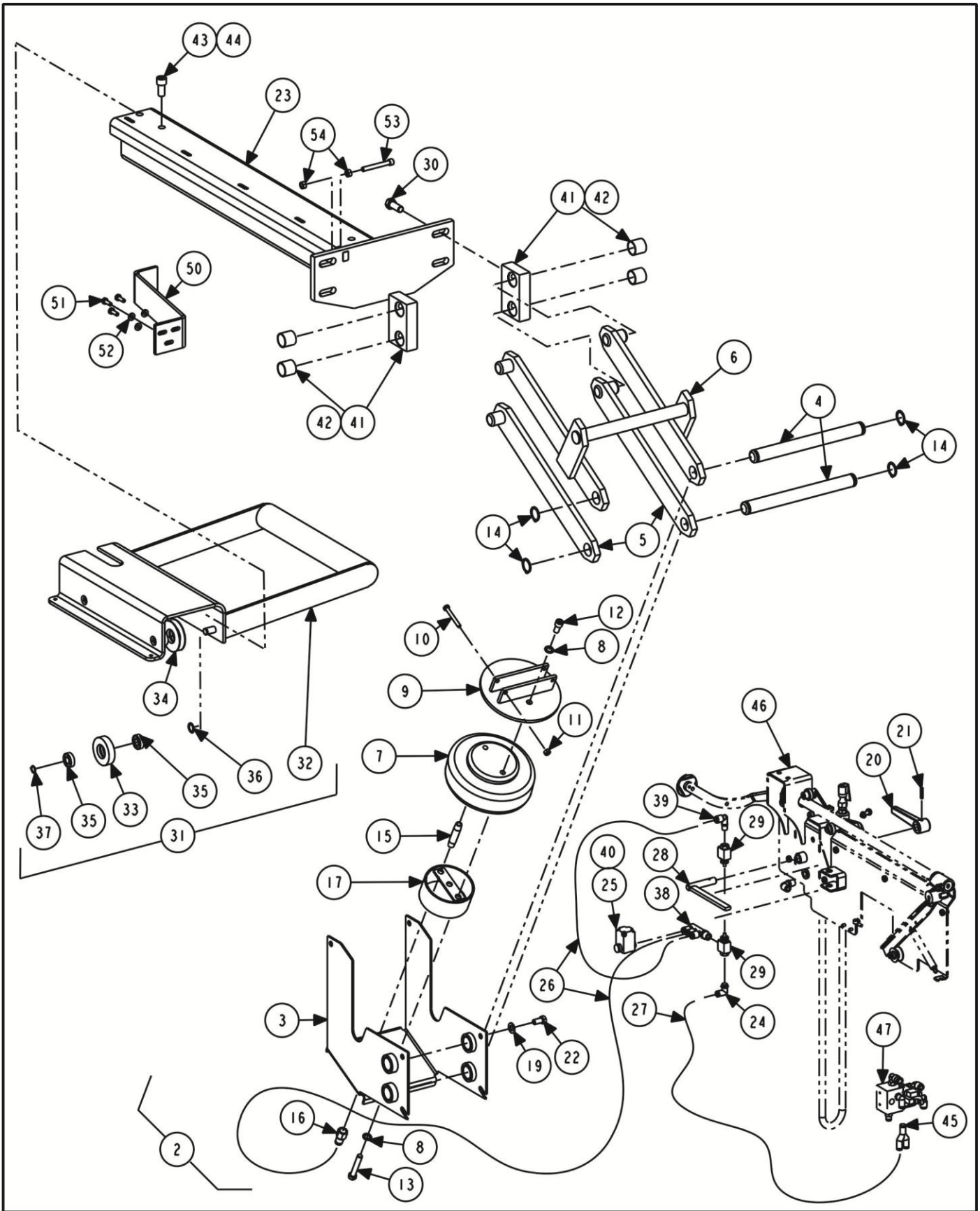
RFT LOAD ROLLER

REFER TO NEXT SHEET FOR PARTS DESCRIPTION LISTING

PARTS DESCRIPTION LISTING

Index No.	Part Number	Description	Qty.
1	111-140-1	LOAD ROLLER ASSEMBLY, GEN4 RTF (Consisting Of:)	1
2	74-105-2	HEX HEAD CAP SCREW 3/8-16 X 1.00 INCH, GRADE 5 (FULL-THREAD)	6
3	77-21-2	WASHER, LOCK 3/8 INCH INTERNAL TOOTH	10
4	62-51-2	FOOT, PLASTIC 1.06 OD X 0.44 INCH HEIGHT	1
5	75-476-2	TRUSS HEAD SHEET METAL SCREW 10 X 3/4 INCH	1
6	113-197-2	BUSHING, LRO SENSOR	1
7	41-112	RETAINER, INNER DATASET	1
8	75-423-2	SCREW.SELF TAPPING 4-40 X .38 INCH	4
9	75-128-2	PAN HEAD MACHINE SCREW 1/4-20 X 3/4 INCH	4
10	77-67-2	WASHER, FLAT 1/4 INCH	4
11	98-283-2	SPRING, AIR ACTUATOR	1
12	74-220-2	SOCKET HEAD CAP SCREW 3/8-16 X .63 INCH (FULL-THREAD)	2
13	14-1162-1-005	BRACKET, AIRBAG	1
14	108-148-2	VALVE, QUICK EXHAUST W MUFFLER	1
15	135-333-2	PIN, DOWEL 3/8 X 1.00 INCH LONG	1
16	57-653-005	BAR, SHAFT ROLLER	1
17	135-53-2	PIN, ROLL 1/4 X 1 INCH	1
18	162-128-2	TAPE, NONSKID TREAD 24 INCH TRIMMED	1
19	111-90-3	ROLLER, LOADED RUNOUT (Consisting Of:)	1
20	111-924-2	ROLLER, LOADED RUNOUT	1
21	130-169-2	BEARING 35 mm X72 mm	2
22	Field Purchase	LOCTITE RETAINING COMPOUND #609	A/R
23	69-1030	COVER, LOAD ROLLER END	2
24	Field Purchase	TAPE, 3M 4920 DOUBLE COATED FOAM	6
25	112-109-2	SNAP RING, EXTERNAL WAVE 1.375 INCH	1
26	74-420-2	BOLT, LEVELING .81-12 OUTER DIAMETER X .59 INNER DIAMETER	2
27	74-206-2	SOCKET HEAD CAP SCREW 1/2-13 X 2.00 INCH (FULL-THREAD)	2
28	77-22-2	WASHER, LOCK 1/2 INCH INTERNAL TOOTH	2
29	77-295-2	WASHER, .515 X 1.00 X .19 INCH THICK	2
30	112-110-2	SNAP RING INTERNAL, 90.5 mm DIA	1
31	130-170-2	BEARING, 50 mm INNER DIAMETER X 90 mm OUTER DIAMETER	1
32	105-401-2	HOUSING, LOAD ROLLER BEARING	1
33	112-111-2	SNAP RING, SMALLEY WHW-312	1
34	130-137-2	BEARING, 40 mm INNER DIAMETER X 80 mm OUTER DIAMETER	1
35	112-106-2	SNAP RING, TRUARC 5008-315	1
36	75-508-3	FLAT HEAD MACHINE SCREW 10-32X.50 INCH	1
37	124-117-2	O-RING .989 INNER DIAMETER X .070 INCH	1
38	46-504-2	SPACER, 7/16 X 7/8 X 5/16 INCH THICK	2
39	74-418-2	SOCKET HEAD CAP SCREW 3/8-16 X 2.00 INCH	3
40	77-296-2	WASHER, .407 X 1.00 X .19 INCH THICK	2
41	112-79-2	SNAP RING, EXTERNAL, 1-9/16 INCH DIAMETER	1
42	103-212-1-005	ARM, LOADED RUNOUT, GEN 4	1
43	97-450-2	SHAFT, ROLLER	1
44	112-83-2	SNAP RING, TRUARC 5108-137	1
45	16-321-2	TUBE, 5/16 INCH OUTER DIAMETER	108 in.
46	76-159-2	NUT, KEPS 3/8-16	1
47	98-303-2	SPRING, HOOD	1
48	128-603-2	DECAL, AIR PRESSURE LIMITS (Not Illustrated)	1
49	137-96-1	HOSE ASSEMBLY, PNEUMATIC SUPPLY	1
50	176-35-1	LOCATOR ASSEMBLY, MAGNET	1
51	125-395-3	SENSOR, HALL, LOAD ROLLER	1
52	75-522-2	SCREW, SELF-TAPPING 10-32 X .38 INCH	2
53	145-184-2	FITTING, 1/4 INCH NPT ADAPTOR	1
54	75-248-2	ROUND HEAD MACHINE SCREW 10-24 X 3/8 INCH	2
55	108-236-1	PNEUMATIC ASSEMBLY, RFT BALANCER (See Sheet 5 for Components)	1
56	136-78-2	FILTER / REGULATOR, GSP9700	1
57	74-43-2	SOCKET HEAD CAP SCREW 3/8-16 X 1.00 INCH (FULL-THREAD) (Not Illustr.)	4
58	113-179-2	BUSHING, BRAKE ACTUATOR ROD (Not Illustr.)	1





WHEEL LIFT

REFER TO NEXT SHEET FOR PARTS DESCRIPTION LISTING

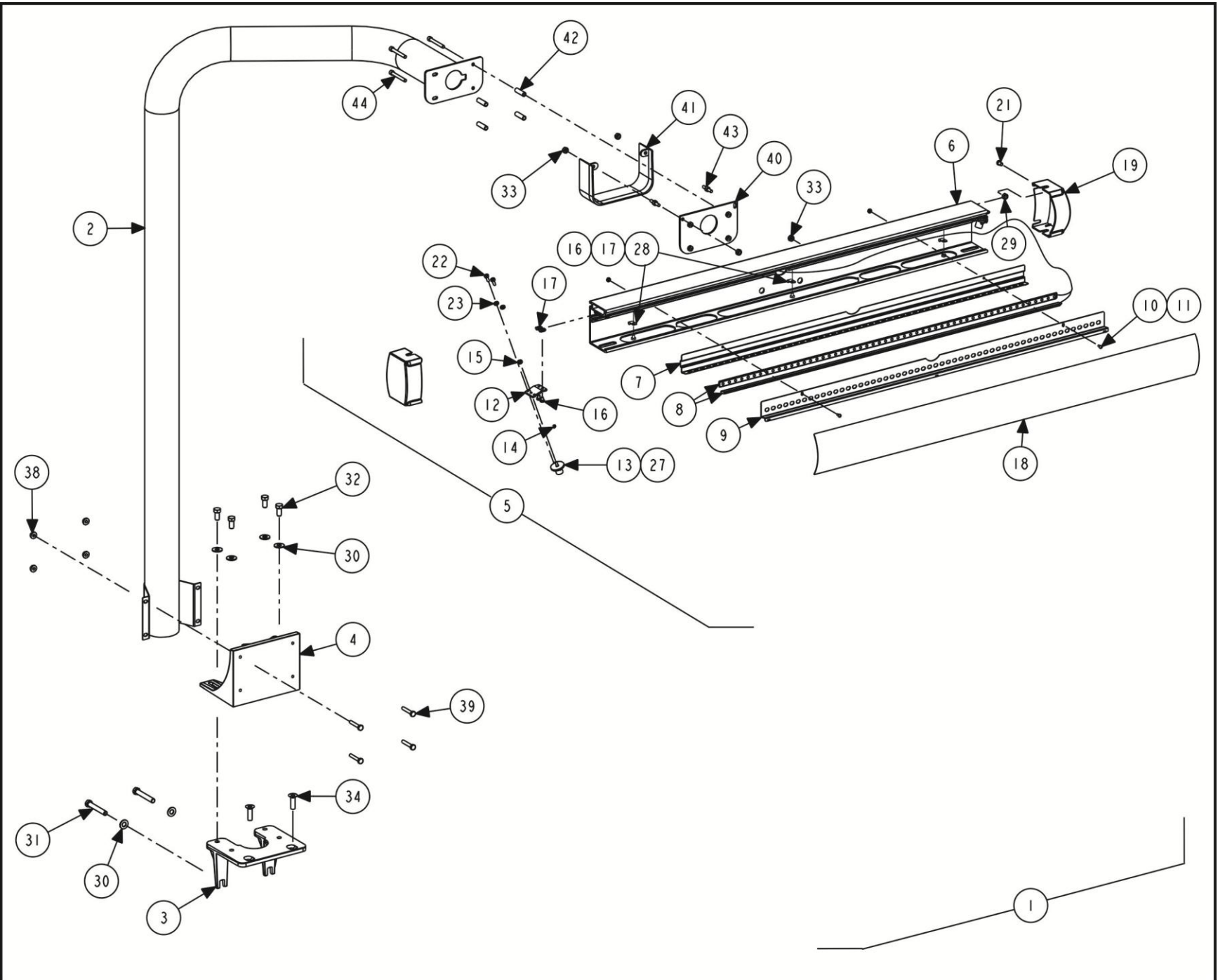
PARTS DESCRIPTION LISTING

Form 12-27e, 06-14a

Sheet 17 of 18

Index No.	Part Number	Description	Qty.
1	72-501-1-PPP	BASE WELDMENT, WHEEL LIFT (Not Illustrated)	1
2	103-161-1	WHEEL LIFT MECHANISM (Consists Of:)	1
3	11-1227-1-005	SUPPORT, WHEEL LIFT WITH BUSHINGS	1
4	97-459-2	SHAFT, WHEEL LIFT SUPPORT	2
5	103-119-1-005	ARM WITH PIN PAINTED	2
6	103-122-1-005	ARM ASSEMBLY PAINTED	1
7	98-388-2	AIRBAG	1
8	77-21-2	WASHER, LOCK 3/8 INCH INTERNAL TOOTH	4
9	11-1022-1-005	SUPPORT ASSEMBLY, CRADLE PAINTED	1
10	75-123-2	HEX HEAD CAP SCREW 1/4-20 X 2.00 INCH	2
11	76-368-2	NUT, LOCK 1/4-20 NYLON INSERT	2
12	74-428-2	SOCKET HEAD CAP SCREW .375-16 X .75 INCH	2
13	74-375-2	HEX HEAD CAP SCREW 3/8-16 X 2.50 INCH, GRADE 5	2
14	112-88-2	SNAP RING, TRUARC 5100-100	4
15	145-366-2	PIPE, NIPPLE 1/4 INCH NPT X 2.50 INCH LONG	1
16	145-365-2	FITTING, 1/4 INCH FPT 1/4 INCH PTC	1
17	161-47-1-005	PEDESTAL, WHEEL LIFT PAINTED	1
18	Field Purchase	LOCTITE #545 THREAD SEALANT (Not Illustrated)	A/R
19	77-75-2	WASHER, FLAT 3/8 INCH	6
20	142-149-2	HANDLE, JACK	1
21	135-61-2	PIN, SPLIT 3/16 X 7/8 INCH	1
22	74-522-2	HEX HEAD CAP SCREW 3/8-16X.75 INCH, GRADE 5 (FULL-THREAD)	6
23	118-723-1-005	BEAM ASSEMBLY, WHEEL LIFT SHORT LOWERED	1
24	145-367-2	1/8 INCH NPT - 5/32 INCH PTC ELBOW	2
25	145-351-2	FITTING, NIPPLE REDUCR 5/16 - 1/4 INCH	1
26	16-423-2	TUBE, AIR .172 INCH INNER DIAMETER	6 ft.
27	16-450-2	TUBE, AIR 5/32 INCH OUTER DIAMETER	3.5 ft.
28	164-84-1	LEVER ASSEMBLY	1
29	108-75-2	VALVE, 2 WAY POPPET	2
30	74-11-2	HEX HEAD CAP SCREW 1/2-13 X 1.25 INCH, GRADE 5 (FULL-THREAD)	4
31	56-72-1	CARRIER, WHEEL LIFT SHORT (Consisting Of:)	1
32	54-1009-1-005	CHANNEL ASSEMBLY, CARRIER SHORT	1
33	111-97-2	ROLLER, WHEEL LIFT FRONT	2
34	111-98-2	ROLLER, WHEEL LIFT REAR	2
35	TR50	BEARING	8
36	98-392-2	CURVED WASHER 1/2 INCH	4
37	112-115-2	SNAP RING, TRUARC #5100-50	4
38	145-372-2	FITTING, TRIPLE UNIVERSAL ELBOW	1
39	145-358-2	FITTING, 1/8 INCH NPT - 1/4 INCH PTC ELBOW	1
40	108-162-1	VALVE, TWO WAY ASSEMBLY.	1
41	121-241-1	BLOCK ASSEMBLY (Includes:)	2
42	130-174-2	BEARING, SLEEVE 1.00 X 1.00 INCH	2
43	74-107-2	SOCKET HEAD CAP SCREW 1/2-13 X 1.00 INCH	1
44	76-25-2	NUT, HEX 1/2-13	1
45	145-318-2	FITTING, Y 3/8 INCH	1
46	103-206-1	ARM ASSEMBLY, 9722 INNER DATASET	REF.
47	108-232-1	PNEUMATIC ASSEMBLY	REF.
48	136-78-2	FILTER / REGULATOR, GSP9700	REF.
49	137-96-1	HOSE ASSEMBLY, PNEUMATIC SUPPLY	REF.
50	228-86-005	STOP, WHEEL LIFT CARRIER, PAINTED	1
51	75-29-2	HEX HEAD CAP SCREW 1/4-20 X .75 INCH, GRADE 5 (FULL-THREAD)	3
52	77-67-2	WASHER, FLAT 1/4 INCH	3
54	74-90-2	SOCKET HEAD CAP SCREW 5/16-18 X 2.50 INCH (FULL-THREAD)	1
55	76-176-2	NUT, JAM 5/16-18	2

TOP DEAD CENTER LASER SYSTEM
REFER TO NEXT SHEET FOR PARTS DESCRIPTION LISTING



PARTS DESCRIPTION LISTING

Form 12-27e, 06-14a

Sheet 18 of 18

Index No.	Part Number	Description	Qty.
1	20-2892-1	KIT, TOP DEAD CENTER LASER SYSTEM GEN 4 (Consists Of:)	1
2	16-912-1-005	TUBE ASSEMBLY, TDC LASER SUPPORT	1
3	11-1243-2	SUPPORT, TDC LASER BASE 9700	1
4	14-1129-2	BRACKET, TDC LASER BASE	1
5	105-657-1	HOUSING, TDC LASER HEADER ASSEMBLY LED (Consists Of:)	1
6	105-514-2	HOUSING, TDC LASER HEADER	1
7	14-1496-005	BRACKET, LED LIGHT BACK	1
8	35-176-2	LAMP-LED LIGHT STRIP SHORT	1
9	69-1460-005	COVER, LED LIGHT	1
10	76-12-2	NUT, HEX 6-32	2
11	75-162-2	ROUND HEAD MACHINE SCREW 6-32 X .31 INCH	2
12	14-1130-2	BRACKET, TDC LASER MOUNT	2
13	105-530-1	HOUSING, TDC LASER ASSEMBLY	2
14	98-427-2	SPRING, TDC LASER ADJUSTMENT	2
15	76-61-2	NUT, KEPS 10-32	2
16	75-608-2	PAN HEAD MACHINE SCREW 10-32 X .31 INCH	5
17	76-382-2	NUT-T	5
18	190-192-2	SIGN, TDC LASER SYSTEM	1
19	69-1204-2	COVER, TDC LASER END CAP	2
20	Field Purchase	ADHESIVE, LOCTITE 242	A/R
21	75-535-2	LOW HEAD SOCKET CAP SCREW 1/4-20 X .38 INCH	2
22	75-161-2	PAN HEAD MACHINE SCREW 10-32 X .50 INCH	4
23	76-11-2	NUT, HEX 10-32	4
24	128-1155-2	DECAL, LASER COMPLIANCE 2M	1
25	128-1308-2	DECAL, RX CABLE WRAP, RIGHT (Not Illustrated)	1
26	128-1309-2	DECAL, RX CABLE WRAP, LEFT (Not Illustrated)	1
27	77-35-2	WASHER, FLAT 5/8 INCH	2
28	12-145-2	CLAMP, CABLE 1/4 INCH DIAMETER	3
29	76-13-2	NUT, HEX 1/4-20	4
30	77-65-2	WASHER, FLAT 3/8 INCH	6
31	74-16-2	HEX HEAD CAP SCREW 3/8-16 X 2.50 INCH (FULL-THREAD)	2
32	74-59-2	HEX HEAD CAP SCREW 3/8-16 X .75 INCH (FULL-THREAD)	4
33	76-13-2	NUT, HEX 1/4-20	6
34	74-461-2	BOLT, FLAT HEAD SOCKET CAP SCREW 3/8-16 X 1/4 INCH	2
35	38-1206-2	CABLE, PC POWER SUPPLY ADAPTOR (Not Illustrated)	1
36	77-45-2	WASHER-FLAT 3/16 (Not Illustrated)	2
37	76-159-2	NUT, KEPS 3/8 - 16 (Not Illustrated)	4
38	76-367-2	NUT, FLANGE 1/4 - 20	4
39	75-703-2	HEX HEAD CAP SCREW 1/4-20 X 1.5 INCH GRADE 8	4
40	51-2332-1-005	PLATE, TDC HAMMERHEAD MOUNT ASSEMBLY	1
41	69-1271-2	COVER, TDC ADJUSTMENT	1
42	98-443-2	SPRING, TDC LASER ADJUSTMENT	4
43	134-141-2	STUD, 1/4-20 DOUBLE ENDED, BRASS	2
44	75-309-2	SOCKET HEAD CAP SCREW 1/4-20 X 2.00 INCH	4
45	75-535-2	LOW HEAD SOCKET CAP SCREW 1/4-20 X .38 INCH (Not Illustrated)	2